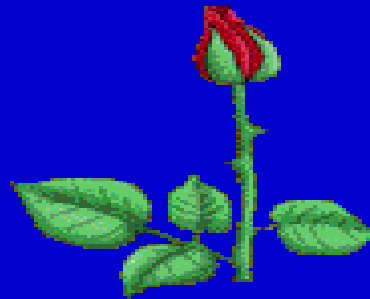


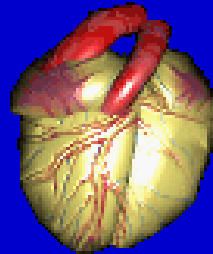
no relevant financial relationships to disclose

# 51<sup>st</sup> Annual January Seminar

January 22-24, 2016  
The Ritz Carlton Downtown, Cleveland, OH



# Physiologic Approach to Cholesterol Regulation: Cholesterol Homeostasis and Steroidopenia



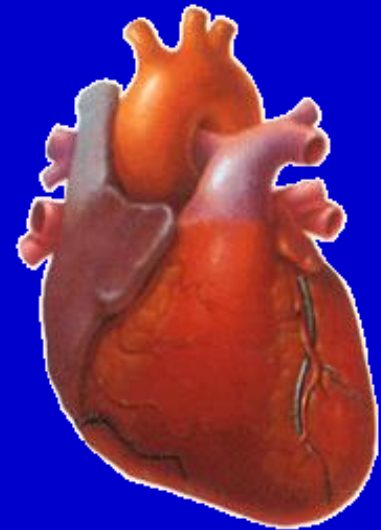
Dr. Sergey A. Dzugan

Institute of Restorative Medicine, Deerfield Beach, FL, USA

# Goals and objectives:

---

- ❖ to test a new hypothesis concerning the association of steroidopenia and hypercholesterolemia
- ❖ to investigate the role of hormonorestorative therapy in hypercholesterolemia management
- ❖ to evaluate the effect of restoration of multiple steroid hormones to youthful levels in hypercholesterolemia treatment



# Leading causes of death in the US 2013<sup>1</sup>

Rank	Causes of death	All persons	Male	Female
	All causes	2,596,993	1,306,034	1,290,959
1.	Diseases of heart	611,105	321,347	289,758
2.	Malignant neoplasms	584,881	307,559	277,322
3.	Chronic lower respiratory diseases	149,205	70,317	78,888
4.	Accidents (unintentional injuries)	130,557	81,916	48,641
5.	Cerebrovascular diseases	128,978	53,691	75,287
6.	Alzheimer's disease	84,767	25,836	58,931
7.	Diabetes mellitus	75,578	39,841	35,737
..10.	Intentional self-harm (suicide)	41,149	32,055	9,094

According to Journal of Patient Safety - between 210 ,000 and 440,000 Americans per year have died as a result of their medical treatments<sup>2,3, 199</sup>:

- 106,000 deaths per year due to negative effects of drugs<sup>2,3</sup>
- 80,000 deaths per year due to infections in hospitals<sup>2,3</sup>
- 20,000 deaths per year due to other errors in hospitals<sup>2,3</sup>
- 12,000 deaths per year due to unnecessary surgery<sup>2,3</sup>
- 7,000 deaths per year due to medication errors in hospitals<sup>2,3</sup>

Iatrogenic causes

# Epidemiology of hypercholesterolemia

---

- ❖ despite decades of research on prevention, detection and management of coronary heart disease (CHD), it is still a number one cause of mortality and morbidity in the developed world for both men and women<sup>4-6</sup>
- ❖ women tend to develop CHD later in life than men do, experiencing a greater risk after their reproductive years; after menopause, women have heart problems as often as men do; at least a third of the individuals that die of CHD are younger than 55 years of age<sup>7</sup>
- ❖ hypercholesterolemia is a major risk factor for coronary atherosclerosis and myocardial infarction (MI) and is also prevalent in the US and in most developed countries<sup>2,3,8</sup>
- ❖ incidence/prevalence in USA: 120 million people have a cholesterol level more than 200 mg/dL, and 60 million - more than 240 mg/dL<sup>9</sup>
- ❖ most developed countries currently have many treatment guidelines for hypercholesterolemia<sup>10</sup>

# Cholesterol – Age axis

(mean standard deviation of cholesterol)<sup>170</sup>

---

Age	Cholesterol
20-29	188.37
30-39	204.75
40-49	221.43
50-59	232.10
60-69	236.55
70-79	227.53
80+	218.18

Starting in childhood, blood cholesterol level rises progressively with each ten-year period until age 70, when cholesterol level begins to stabilize and then decline. By age 80 there is a significant drop to the values noted in much younger age group.<sup>171</sup>

# Hypercholesterolemia and cholesterol-lowering drugs (CLD):

## Cholesterol-Lowering Drugs:

- ❖ Statins (also known as HMG CoA reductase inhibitors) – atorvastatin, simvastatin
  - ❖ Selective cholesterol absorption inhibitors - ezetimibe
  - ❖ Resins (also known as bile acid-binding drugs) – cholestyramine
  - ❖ Fibrates (fibric acid derivatives) – gemfibrozil, clofibrate
  - ❖ Niacin (nicotinic acid)
- 
- ❖ currently, statins play a leading role in the treatment of hypercholesterolemia<sup>11,12</sup>
  - ❖ a number of studies show that although primary prevention is effective, long-term tolerability is still a matter of controversy<sup>13,14</sup>
  - ❖ the reduction of total cholesterol (TC) in the blood by these drugs is associated with a decrease in the incidence of CHD, but also with an increase of noncardiovascular mortality; CLD have not been proven to extend a person's life span<sup>15-19</sup>
  - ❖ the results clearly demonstrated that statins reduce lipid levels but do not prevent restenosis after coronary angioplasty<sup>20</sup>

# CLD and mortality

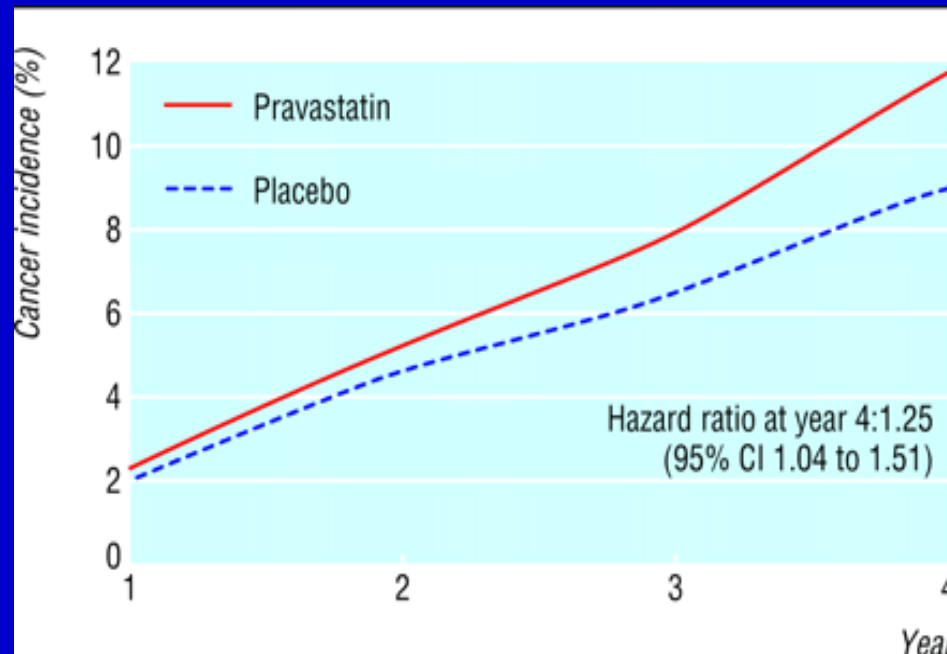
---

- ❖ a meta-analysis of major primary prevention trials shows that the 15% decrease in deaths from heart disease in the cholesterol lowering treatment groups is offset by increases in deaths from other causes<sup>21</sup>
- ❖ a meta-analysis of cholesterol-lowering trials demonstrated that coronary mortality was not lowered by cholesterol lowering, but total mortality was increased<sup>22,23</sup>
- ❖ cholesterol lowering appears to increase the risk for cancer, accidental and violent death, stroke, and oddly enough, CHD when certain medications are used<sup>24,25</sup>
- ❖ low or reduced serum cholesterol concentration increases mortality from hemorrhagic stroke<sup>26</sup>



# CLD and cancer

- ❖ all members of the two most popular classes of CLD (the fibrates and the statins) cause cancer and toxic liver damage in rodents<sup>27</sup>
- ❖ a significant increase in the incidence of cancer, especially gastrointestinal, is observed in CLD group<sup>28</sup>
- ❖ CLD increases cancer at the expense of decreasing cardiovascular disease in certain populations, such as the elderly and those treated with immunotherapy for cancer. Furthermore, there may be a relationship between statin dose and cancer.<sup>29</sup>



Cancer incidence after statin treatment of elderly people.

# CLD and hormones

---

- ❖ there is a possibility that CLD treatment is associated with hormonal perturbations<sup>30</sup>
- ❖ a significant association between statin use and total testosterone was observed<sup>31</sup>
- ❖ Simvastatin was found to suppress the synthesis of the androgens androstenediol, total testosterone (-23%,  $P < 0.001$ ), free testosterone (-32%,  $P < 0.001$ ), androstendione (-20%,  $P < 0.01$ ), and dehydroepiandrosterone sulfate (-17%,  $P < 0.05$ )<sup>194-198</sup>
- ❖ mevastatin induced a profound concentration-dependent inhibition of DNA synthesis, decreased production of progesterone (by up to 49%), and testosterone (by up to 52%)<sup>32</sup>
- ❖ clofibrate significantly reduced plasma levels of testosterone and cortisol<sup>33</sup>
- ❖ simvastatin significantly decreased secretion of progesterone from the placental explants<sup>193</sup>

# Side effects from CLD

- ❖ side effects of CLD were seen in 4-38% of patients resulting in discontinuation and dose reduction;<sup>5,34-37</sup> some studies registered the incidence of adverse events in more than 73% (73.6% for cerivastatin and 74.9% for pravastatin)<sup>38</sup>
- ❖ most patients who begin lipid-lowering therapy stop it within 1 year, and only about one third of patients reach treatment goals;<sup>39</sup> 60% of patients discontinued their medication over 12 months<sup>40</sup>
- ❖ the most common adverse effects of CLD: abdominal pain, chest pain, dizziness, asthenia/fatigue, fibromyalgia, headache, insomnia, elevations in hepatic transaminase levels, and upper respiratory tract infection<sup>34,41</sup>
- ❖ statins increase blood glucose levels (hyperglycemia)<sup>200,201</sup>
- ❖ also, the adverse events from CLD include poor quality of life, eczema, skin rashes, insomnia, cramp, exercise intolerance, fatigability, severe rhabdomyolysis, renal failure, and death<sup>42-49</sup>

Statins have a direct effect on the respiratory chain of the mitochondria. Mitochondrial damage leads to a mitochondrial calcium leak and it may account for apoptosis, oxidative stress, and muscle remodeling and degeneration.<sup>47,48</sup>

# Side effects from CLD (cont.)

- ❖ the incidence of congestive heart failure has tripled in the time that statins have been on the market;<sup>50</sup> statins may impair heart pumping function due to their myopathic effect<sup>51</sup>
- ❖ statins deplete CoQ10 and this could contribute to heart disease. In 1990, Merck received a patent for statin drugs formulated with up to 1,000 mg of coenzyme Q10 to prevent or alleviate *cardiomyopathy*, that can cause congestive heart failure. However, Merck has not brought these product to market or educated physicians on the importance of supplementing CoQ10 to offset the dangers of these drugs to the heart. Because they hold the patent, other drug companies are prevented from coming out with a statin/CoQ10 product.<sup>50</sup>
- ❖ cerivastatin was pulled from the market in 2001 because of severe side effects, serious injury, rhabdomyolysis, organ damage and death; worldwide, 100 deaths and 1,600 injuries have been linked to the drug<sup>49</sup>

If you are taking a statin and if you want to avoid becoming a statistic, it is imperative that you take coenzyme Q10 daily. CoQ10 is also called ubiquinone, which means "occurring everywhere".

# Side effects from CLD (cont.)

---

- ❖ animal studies showed a possible significant hepatic, testicular atrophy, neurological toxicity, hemorrhages in the gastrointestinal tract, bleeding in the brain stem, fibroid degeneration of vessel walls in choroid plexus, and lens opacity<sup>52-54</sup>
- ❖ both statins and fibrates may cause erectile dysfunction (ED)<sup>55,56</sup>
- ❖ cognitive impairment, dementia, memory loss, severe irritability, and peripheral neuropathy may occur with statin therapy<sup>57-62</sup>
- ❖ restlessness, euphoria, mental confusion, lupus-like syndrome, pleurisy and arthralgia are possible adverse events of statins<sup>63,64</sup>
- ❖ all statins at all doses resulted in tachyphylaxis (a decreasing response to physiologically active agents)<sup>65</sup>
- ❖ animal models have provided evidence for the teratogenic effects of statins on pregnancy outcome<sup>193</sup>

Remember that, if you don't have enough cholesterol, you won't make enough sex hormones.

# The determinant data in the suggestion of a new hypothesis:

- ❖ the multiple adverse events from current CLD, including the most severe side effects such as severe rhabdomyolysis, renal failure, and death;<sup>42-48</sup> all of these facts indicate the need to find the safer and more effective treatment regiment for elevated TC
- ❖ the similarity of symptoms in patients during use of CLD, are as in patients with fibromyalgia and chronic fatigue syndrome (CFS)<sup>66-68</sup>
- ❖ controversial data about the effect of steroidal hormones on hypercholesterolemia; previously hormone replacement therapy (HRT) was considered as first-line treatment for hypercholesterolemia to prevent CHD in women; recent studies, however, show no benefit of HRT for secondary prevention of coronary events<sup>6,69-85</sup>
- ❖ higher production of cholesterol during increased physiologic demands such as: pregnancy, childhood growth, stress, during the immune response or tissue repair, starvation, and exercise<sup>8,86-102</sup>
- ❖ diminished concentrations of TC in women with threatened abortion<sup>103</sup>
- ❖ changed cholesterol production during infection, trauma, and surgery<sup>104-107</sup>
- ❖ high TC was not predictive after age 47 in Framingham study<sup>108,109</sup>

TC, LDL and TRG increase significantly during pregnancy in all women. TC rises up to 43% (mean 314 mg/dL) in the third trimester; hypercholesterolemia was found in up to 53.1% of school children in different studies.

# The determinant data in the suggestion of a new hypothesis (cont.):

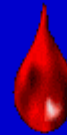
---

- ❖ the fact that up to 70% of patients with CHD or MI had a normal level of TC<sup>4,110-116</sup>
- ❖ the association between low TC level and higher mortality rates from cancer, liver disease, respiratory disorders, and injuries<sup>117-125</sup>
- ❖ inverse relationship between TC and LDL levels and cancer incidence<sup>29,126-130</sup>
- ❖ altered TC level (usually low) in patients with psychiatric disorders: depression, changed personality, suicidal ideation, impulsive aggressive behavior, schizophrenia, etc.<sup>131-139</sup>
- ❖ a significantly lower values of TC in individuals with adverse health characteristics, including alcohol use, substance abuse, heroin addiction and depression with suicide tendency<sup>121,140-143</sup>
- ❖ information that patients with low TC levels had the highest rates of death from CHD,<sup>144,145</sup> whereas those with elevated TC seemed to have a lower risk for death from CHD<sup>145</sup>
- ❖ changed TC and LDL levels were registered in individuals with autism,<sup>146</sup> intracranial hemorrhage,<sup>125,147</sup> cataract,<sup>148</sup> celiac disease,<sup>149</sup> ED,<sup>150-153</sup> CFS<sup>154</sup>
- ❖ our clinical experience with the use of hormonorestorative therapy (HT) for hypercholesterolemic patients and immunorestorative therapy for cancer patients<sup>155-161</sup>

# Guilt by definition?

---

- ❖ we know that low cholesterol is bad, and so is high cholesterol
- ❖ everyone knows that cholesterol can deposit in the arterial wall and can be a factor in atherosclerotic plaque, which can lead to the blockage of arteries. Cholesterol does a bad job in this case. But is it as at fault as appears at first glance?
- ❖ if a person gets a bruise, is it necessary to remove all the blood in the body to remove the bruise, because the presence of blood in this instance causes the bruise?!





# Lipid hypothesis history

---

- ❖ the lipid hypothesis was proposed by Rudolph Virchow in 1856 and suggested that blood lipid accumulation in arterial walls causes atherosclerosis<sup>162</sup>
- ❖ there are many players in the “discovery” of cholesterol’s link to heart disease:
  - ✓ John Gofman hypothesised in 1950 that blood cholesterol was the main cause of CHD<sup>163,164</sup>
  - ✓ Duff and McMillian formulated the lipid hypothesis in its modern form in 1951<sup>165</sup>
  - ✓ Ancel Keys published paper that discussed saturated fats and cholesterol as the cause of heart disease in 1953<sup>166</sup>
- it was found that people who died of heart disease often had high level of cholesterol in their blood
- ❖ many studies have confirmed that elevated cholesterol levels are associated with an increased risk of atherosclerosis. The key word is “associated”.

My question is:

- did patients die from high cholesterol level? or
- cholesterol level was elevated due to serious physiological malfunctions and patients died from them?

# Lipid hypothesis – Scientific Consensus

---

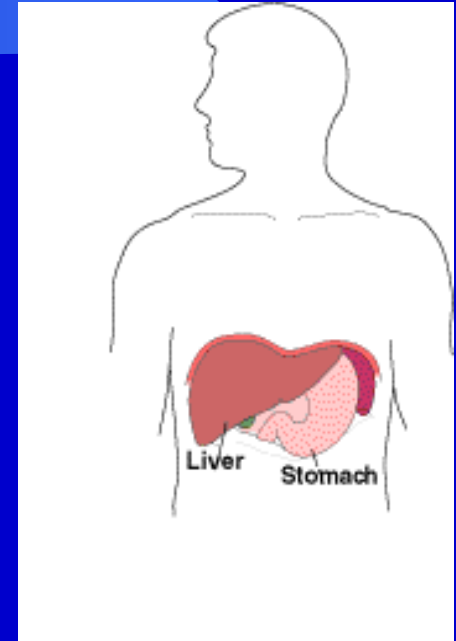
- ❖ interpretation of data allowed the lipid hypothesis to be “established” in as scientific fact by the end of the last century.<sup>205</sup>
- ❖ a survey was conducted in 1978 and found that a large majority of researchers and practitioners were supportive of the validity of the lipid hypothesis.<sup>206</sup>
- ❖ in this survey, 211 prominent researchers in the field were questioned about the association of the plasma cholesterol biomarker and the link of disease to diet. 90% (193) responded with the following answers:
  - ✓ do you think there is a connection between plasma cholesterol level and the development of coronary heart disease?
  - ✓ do you think that our knowledge about diet and coronary heart disease is sufficient to recommend a moderate change in the diet for the population of an affluent society?

My question is:

- Is a consensus based on survey results the real Scientific Method?

# Cholesterol misconception

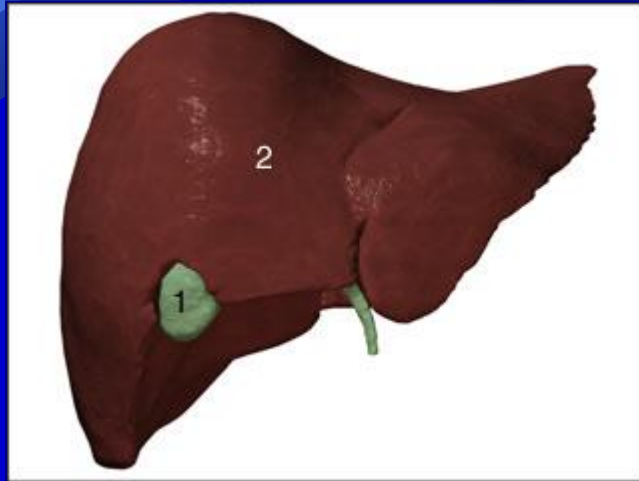
- ❖ Cholesterol is an important part of the blocked arteries story, but...blockages develop because of many other factors.
- ❖ Everyone knows only that cholesterol is a major component of atherosclerotic plaques.
- ❖ But... how many of us understand the absolutely vital role of cholesterol in our body?!
- ❖ No one cardiologist or heart surgeon has mentioned the significant cholesterol contributions to the proper functioning of a human body.
- ❖ Because of the propaganda, you may think that cholesterol is a harmful alien substance that should be avoided at all costs. In fact, nothing could be further from the truth.



In the animation "bad" cholesterol is shown being deposited in the blood vessel walls, while "good" cholesterol takes it away.

The truth cannot be suppressed by the majority or decreed by consensus!

# Multi-function, blood-processing “factory”



- ◆ 85-95% of cholesterol in our blood is “endogenous” or manufactured by our own cells (mostly liver)
- ◆ 5-15% comes from the food we eat
- ◆ so, is zero-cholesterol good...or even healthy?

What's  
Cholesterol?



# What is cholesterol?

---

- ❖ Cholesterol is a peculiar molecule. It is often called a lipid, steroid, fat or a sterol (a combination steroid and alcohol, although it doesn't behave like alcohol), but the chemical term for the cholesterol molecule does not defined exactly yet.
- ❖ Cholesterol is absolutely essential for life. It is found in all cells of the body.
- ❖ 25% of cholesterol is localized in the brain.<sup>167,187</sup> All cholesterol in the brain is a product of local synthesis since lipoproteins are unable to cross the blood-brain barrier.<sup>168,188-192</sup>
- ❖ Cholesterol is:
  - a major building block from which cell membranes are made
  - used to make a number of important substances: steroid hormones, bile acids, and, in conjunction with sunlight, vitamin D3.

➤ only seven percent of the body's cholesterol is found in the blood

# Cholesterol role in brain function<sup>202,203</sup>

- ◆ cholesterol itself plays essential role in the mechanisms of synaptic function, plasticity and neurodegeneration
- ◆ central neurodegeneration features in a number of neurodegenerative diseases may represent functional consequences of abnormal neural cholesterol misregulation

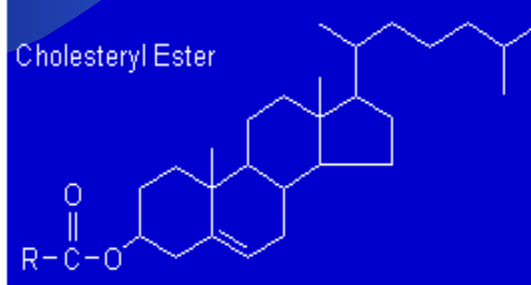
# Cholesterol molecule

Cholesterol has four hydrocarbon rings. Three of them are six-carbon rings, and one of them is a five-carbon ring. All steroid hormones have a similar chemical structure. Definitely, cholesterol is not fat.

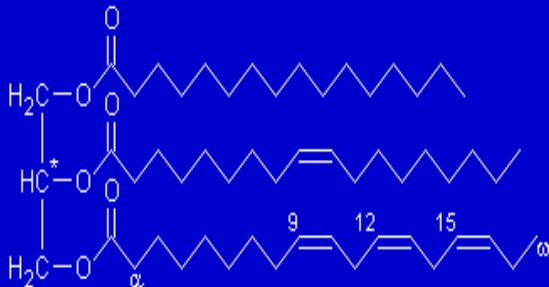
cholesterol



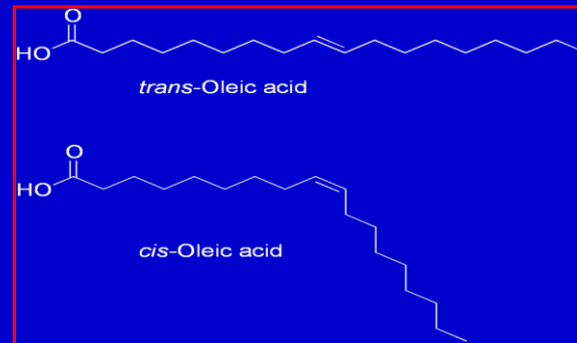
Cholesteryl Ester



Cholesteryl Ester



Fat triglyceride shorthand formula



Unsaturated fatty acids

Saturated fatty acids have a similar form to unsaturated fatty acids, but do not contain any double bonds.



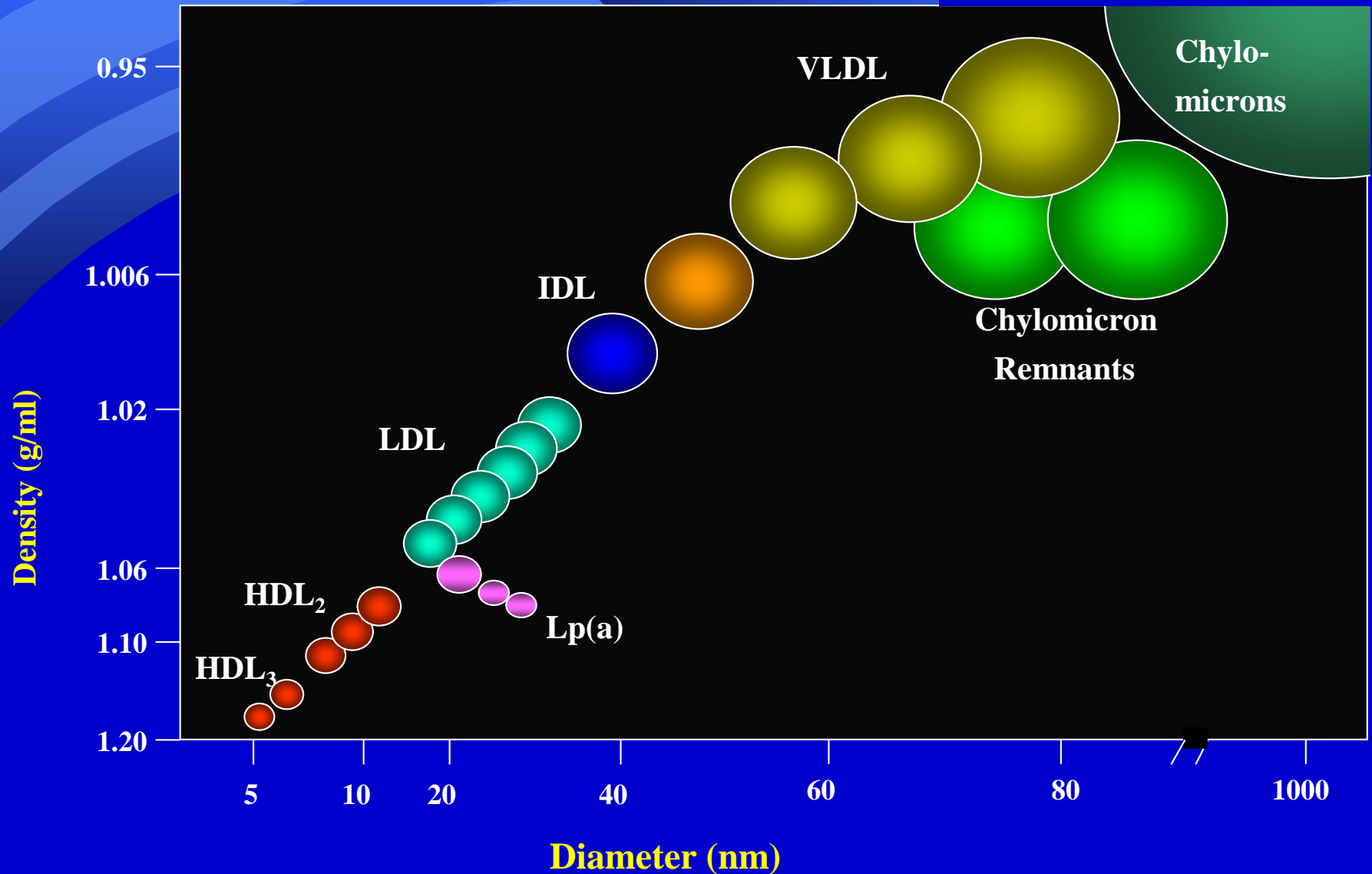
# Cholesterol carriers

---

- ❖ most fats are transported around the body and stored as TRG
- ❖ neither cholesterol nor TRG can be dissolved in a blood; they have to be wrapped up in a sphere known as a lipoprotein in order to transport them out of the gut.

In other words, *lipoproteins are the transport for insoluble cholesterol and TRG.*

# Lipoproteins are classified according to their density



# 5 basic types of lipoproteins:<sup>169</sup>

---

- ❖ chylomicron (contains about 85-88% of TRG, ~3% cholesteryl esters and ~1% cholesterol, ~8% phospholipids, and 1-2% of protein) – are largest in size (1000 nm) in size and least dense (<0.95)
- ❖ very low-density lipoprotein (VLDL) (carries mostly TRG - 50-55%, 12-15% cholesteryl esters and 8-10% cholesterol, 18-20% phospholipids, and 5-12% protein) – 25-90 nm in size with a density of ~0.98
- ❖ intermediate-density lipoprotein (IDL) (contains about 32-35% cholesteryl esters and 8-10% cholesterol, 24-30% TRG, 25-27% phospholipids, 10-12% protein) - 40 nm in size and more dense (~1.0)
- ❖ low-density lipoprotein (LDL) (composition: 37-48% cholesteryl esters and 8-10% cholesterol, 10-15% TRG, 20-28% phospholipids, and 20-22% protein) - 26 nm in size and more dense (~1.04)
- ❖ high-density lipoprotein (HDL) (composition: 15-30% cholesteryl esters and 2-10% cholesterol, 3-15% TRG, 26-46% phospholipid, and 55% protein) – 6-12.5 nm in size and most dense (~1.12)

# Function of Lipoproteins:

- ❖ **Chylomicron** transports TRG from the intestines to the liver, skeletal muscle, and to adipose tissue. Liver then reconstructs component parts into VLDL and sends them into the bloodstream.
- ❖ **VLDL** carries newly synthesized TRG from the liver to adipose tissue. VLDL becomes a IDL particle after it has lost its TRG content.
- ❖ **IDL** is a short-lived lipoprotein, converts in the liver to LDL and usually is not detectable in the blood
- ❖ **LDL** is the primary plasma carrier of cholesterol for delivery from the liver to all tissues. Cholesterol is then absorbed by the cells of the body.
- LDL particles are involved in the formation of plaques in the walls of the arteries.

LDL is known as “bad cholesterol” (even though LDL is not cholesterol)

- ❖ **HDL** molecules are made in the intestine and the liver. HDL collects cholesterol from the body's tissues, and brings it back to the liver.
- excess cholesterol is reabsorbed by the liver and reused or excreted into bile

HDL is known as “good cholesterol” (even though HDL is not cholesterol)

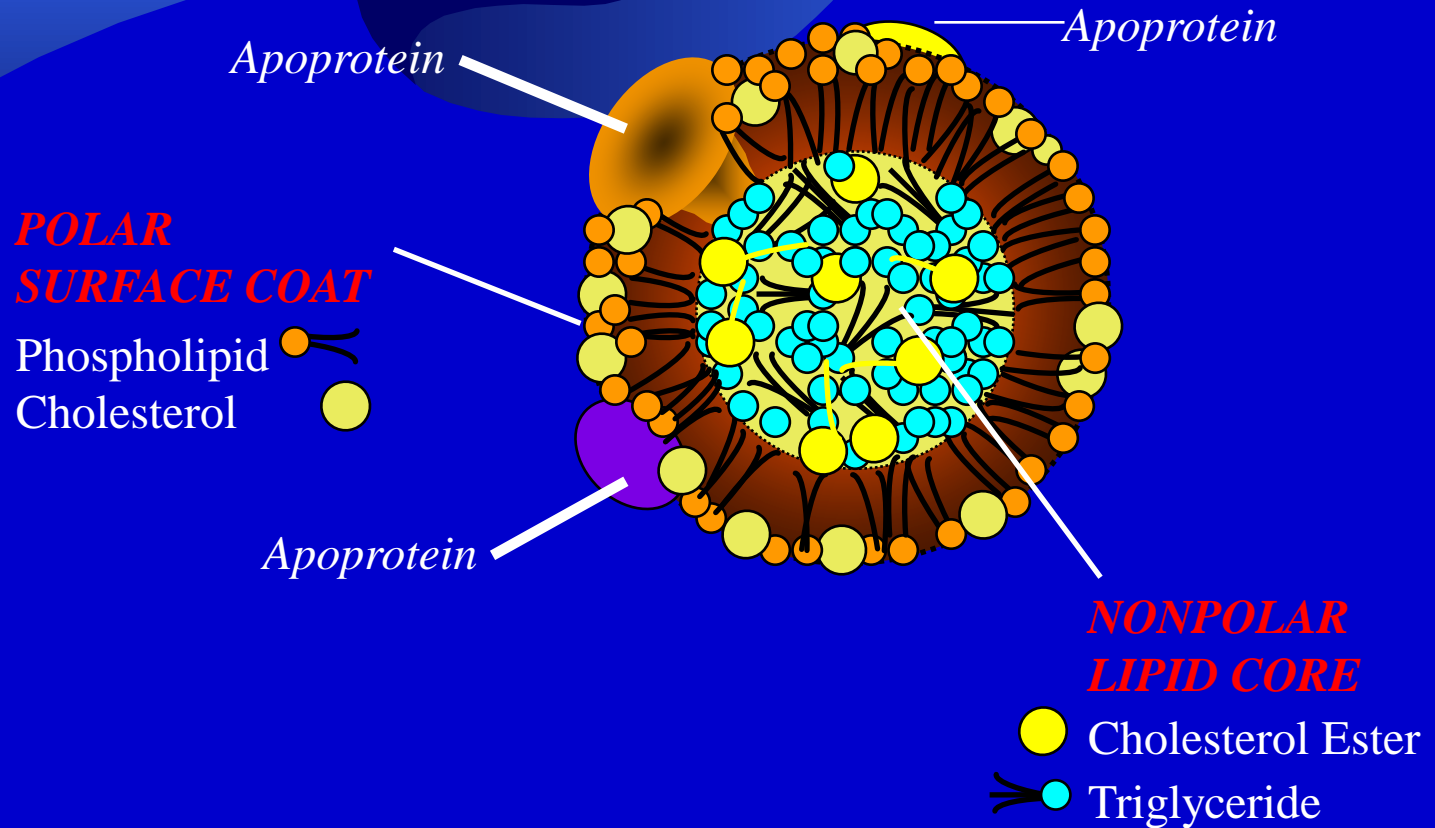
# Composition of the Major Lipoprotein Complexes

Complex	Source	Density (g/ml)	%Protein	%TG <sup>a</sup>	%PL <sup>b</sup>	%CE <sup>c</sup>	%C <sup>d</sup>	%FFA <sup>e</sup>
Chylomicron	Intestine	<0.95	1-2	85-88	8	3	1	0
VLDL	Liver	0.95-1.006	7-10	50-55	18-20	12-15	8-10	1
IDL	VLDL	1.006-1.019	10-12	25-30	25-27	32-35	8-10	1
LDL	VLDL	1.019-1.063	20-22	10-15	20-28	37-48	8-10	1
*HDL <sub>2</sub>	Intestine, liver (chylomicrons and VLDLs)	1.063-1.125	33-35	5-15	32-43	20-30	5-10	0
*HDL <sub>3</sub>	Intestine, liver (chylomicrons and VLDLs)	1.125-1.21	55-57	3-13	26-46	15-30	2-6	6
Albumin-FFA	Adipose tissue	>1.281	99	0	0	0	0	100

a Triacylglycerols, b Phospholipids, c Cholesteryl esters, d Free cholesterol, e Free fatty acids

\* HDL<sub>2</sub> and HDL<sub>3</sub> derived from nascent HDL as a result of the acquisition of cholesteryl esters

# Lipoprotein Structure



Adapted from Treatment of Heart Diseases :1992, Etiologies and Treatment of Hyperlipidemia-Scott Grundy, MD, PhD

# Apoprotein Classifications

Apoprotein - MW (Da)	Lipoprotein Association	Function and Comments
apoA-I - 29,016	Chylomicrons, HDL	major protein of HDL, activates lecithin:cholesterol acyltransferase, LCAT
apoA-II - 17,400	Chylomicrons, HDL	primarily in HDL, enhances hepatic lipase activity
apoA-IV - 46,000	Chylomicrons and HDL	present in triacylglycerol rich lipoproteins
apoB-48 - 241,000	Chylomicrons	exclusively found in chylomicrons, derived from apoB-100 gene by RNA editing in intestinal epithelium; lacks the LDL receptor-binding domain of apoB-100
apoB-100 - 513,000	VLDL, IDL and LDL	major protein of LDL, binds to LDL receptor; one of the longest known proteins in humans
apoC-I - 7,600	Chylomicrons, VLDL, IDL and HDL	may also activate LCAT
apoC-II - 8,916	Chylomicrons, VLDL, IDL and HDL	activates lipoprotein lipase
apoC-III - 8,750	Chylomicrons, VLDL, IDL and HDL	inhibits lipoprotein lipase
apoD, 33,000	HDL	closely associated with LCAT
cholesterol ester transfer protein, CETP	HDL	exclusively associated with HDL, cholesteryl ester transfer

# Apoprotein Classifications (cont.)

Apoprotein - MW (Da)	Lipoprotein Association	Function and Comments
apoE - 34,000 (at least 3 alleles [E <sub>2</sub> , E <sub>3</sub> , E <sub>4</sub> ] each of which have multiple isoforms)	Chylomicron remnants, VLDL, IDL and HDL	binds to LDL receptor, apoE <sub>e-4</sub> allele amplification associated with late-onset Alzheimer's disease
apoH - 50,000 (also known as b-2-glycoprotein I)	Chylomicrons	triacylglycerol metabolism
apo(a) - at least 19 different alleles; protein ranges in size from 300,000 - 800,000	LDL	disulfide bonded to apoB-100, forms a complex with LDL identified as <a href="#">lipoprotein(a)</a> , <a href="#">Lp(a)</a> ; strongly resembles plasminogen; may deliver cholesterol to sites of vascular injury, high risk association with premature coronary artery disease and stroke



# Total cholesterol:

$$\text{Total Cholesterol} = \text{HDL} + \text{LDL} + \text{TRG}/5$$

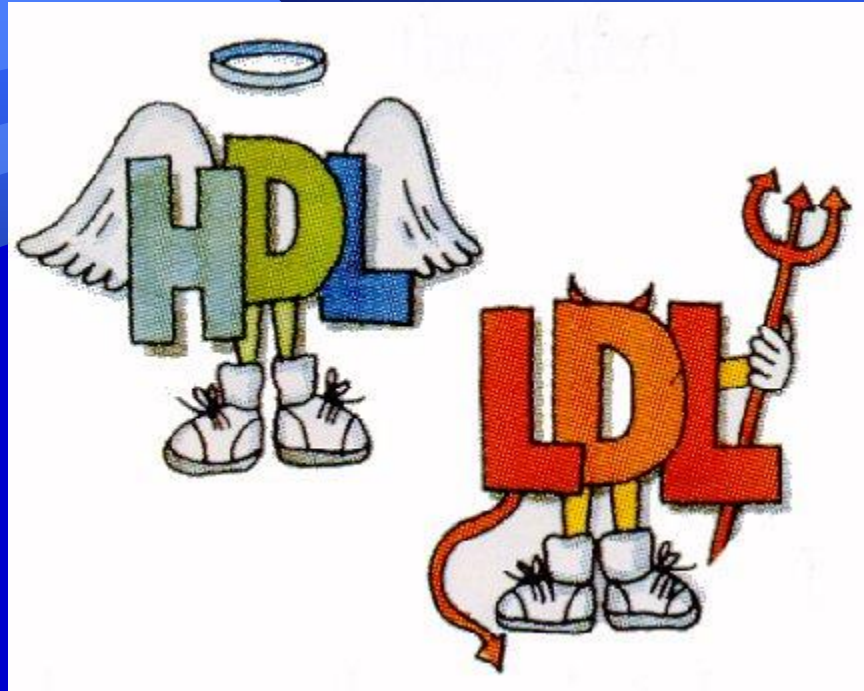
$$\text{How many apples?} \quad 35 \text{ pineapples} + 130 \text{ pears} + 150 \text{ peaches}/5$$



= 195 apples

**This formula provides an approximation**

- ✦ The lipid profile does not measure LDL particles directly but instead estimates them using the Friedewald equation, which estimates LDL from measurements of TC, triglycerides, and HDL
- ✦ LDL cannot be calculated if plasma triglyceride is >400 mg/dL



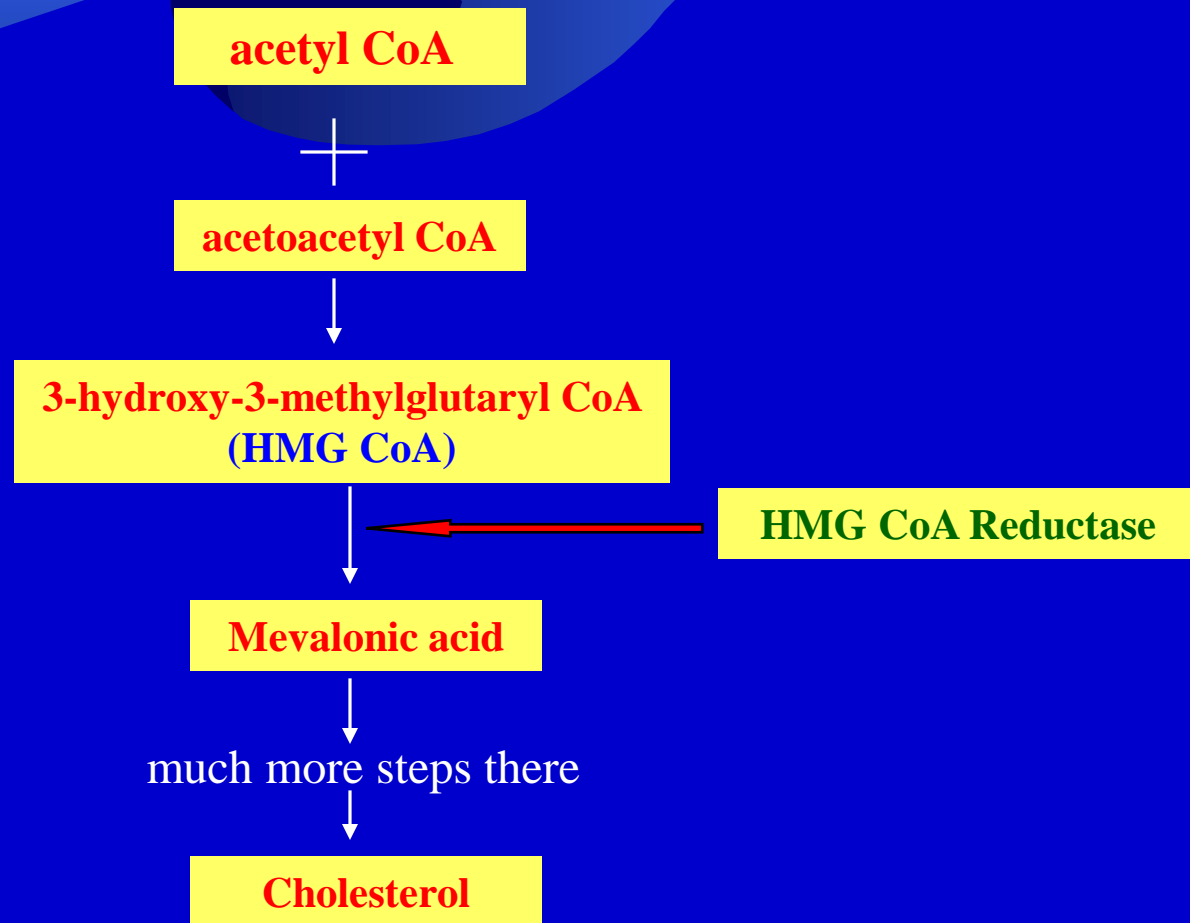
- LDL: “bad”
  - associated with high risk of heart attack
- HDL: “good”:
  - protective effect for heart

# HDL is NOT a good cholesterol anymore<sup>204</sup>

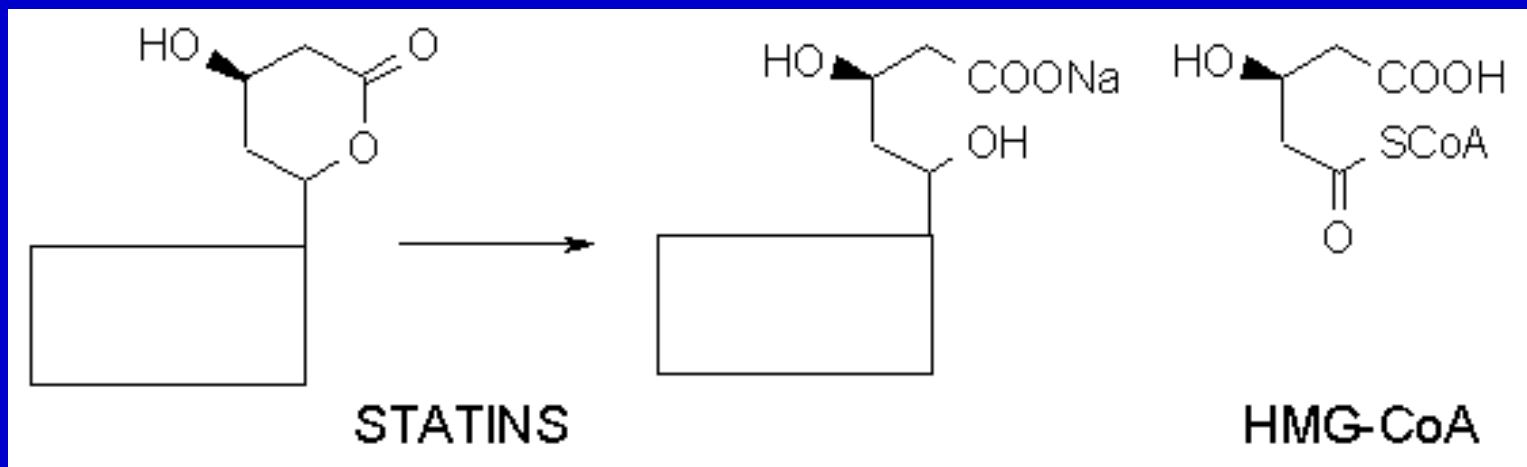
- ✦ increase CHD on high HDL
- ✦ HDL has been described as a "chameleon-like" lipoprotein; it is anti-inflammatory in the basal state and pro-inflammatory during an acute phase response
- ✦ “good” HDL becomes “bad” due to conversion of anti-inflammatory HDL into pro-inflammatory HDL. It increases risk of atherosclerosis

# Cholesterol Biosynthesis

(simplified version)

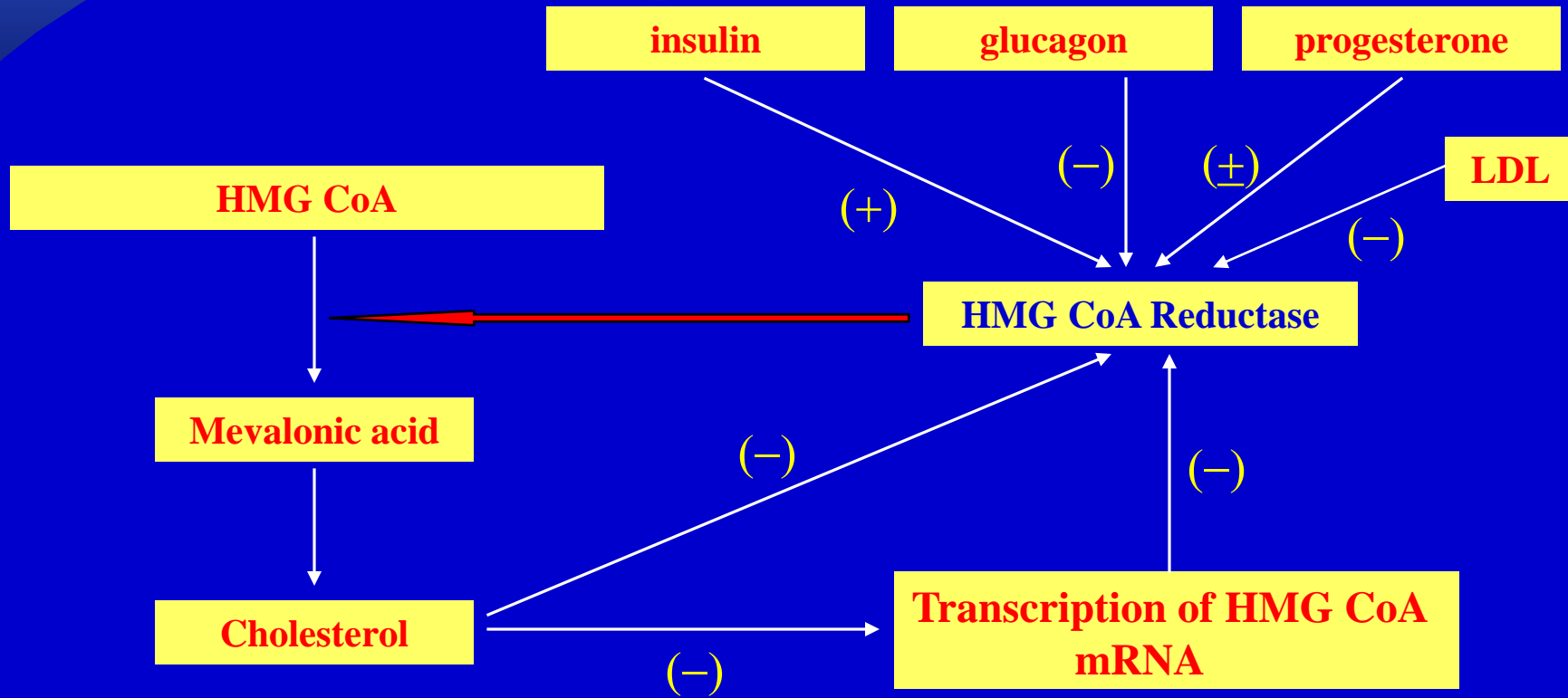


# Statin drugs are structural analogs of HMG-CoA

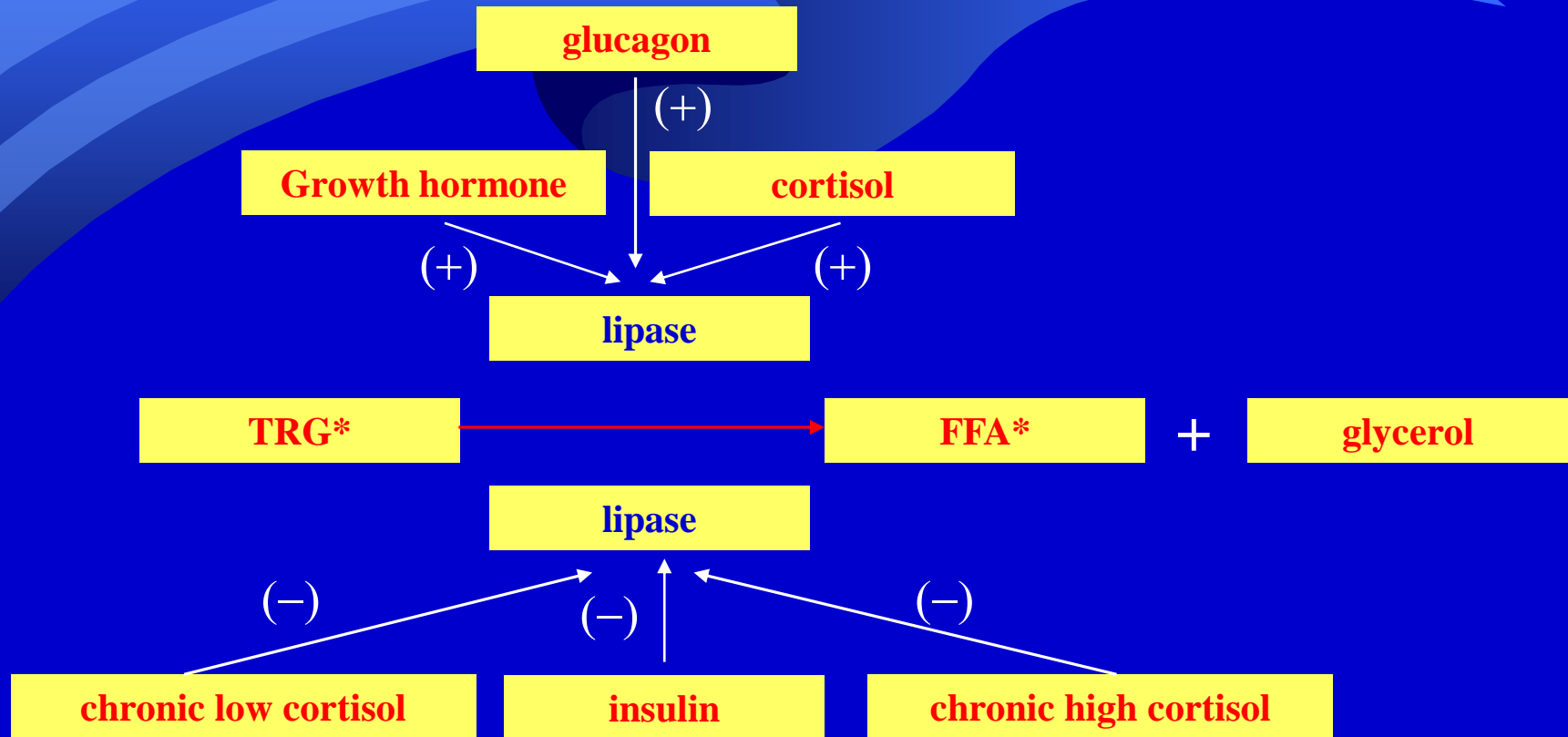


# Regulation of HMG CoA Reductase

- ◆ negative feedback regulation
- ◆ hormonal regulation
- ◆ transcriptional regulation

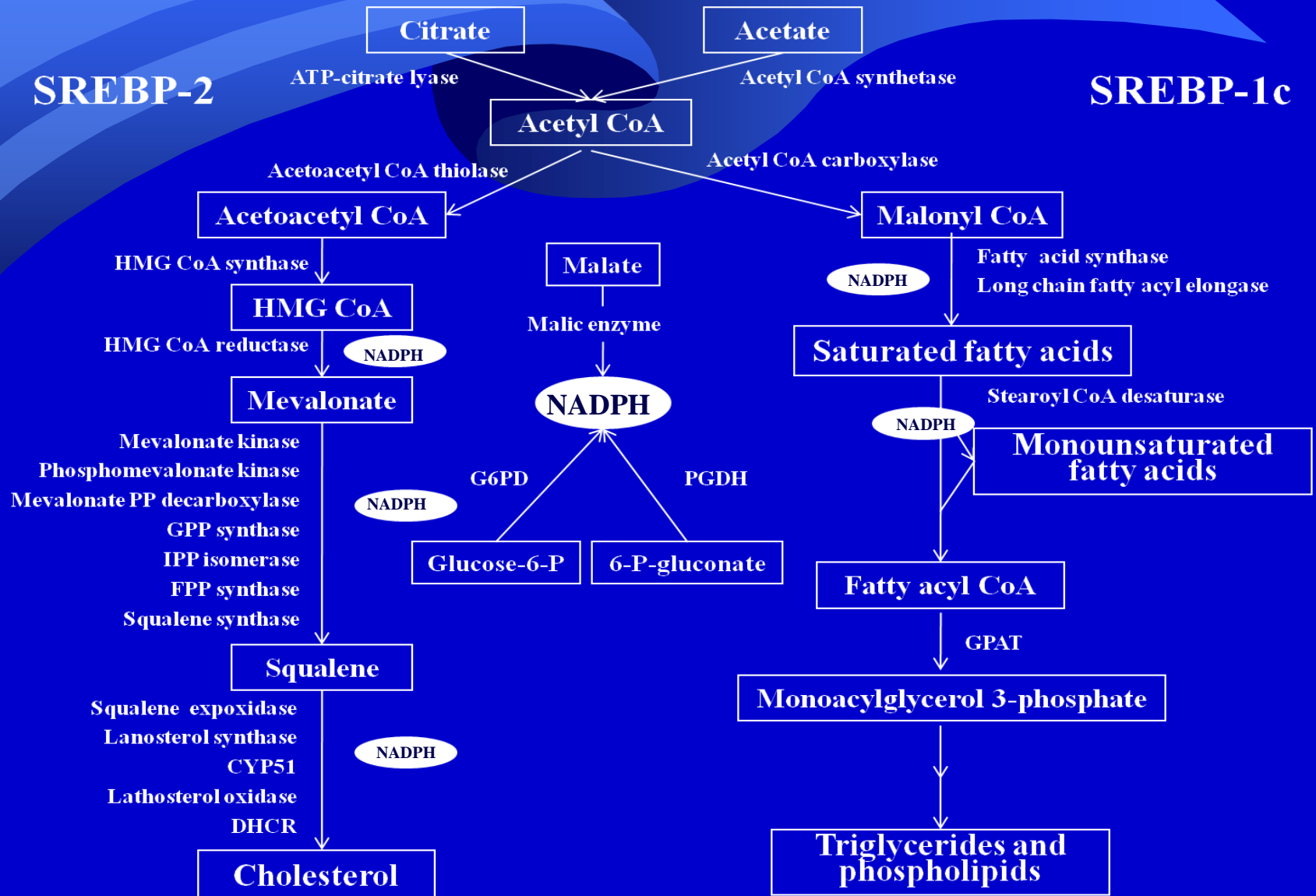


# Effect of various hormones on lipase



- \* TRG – triglycerides
- \* FFA – free fatty acids

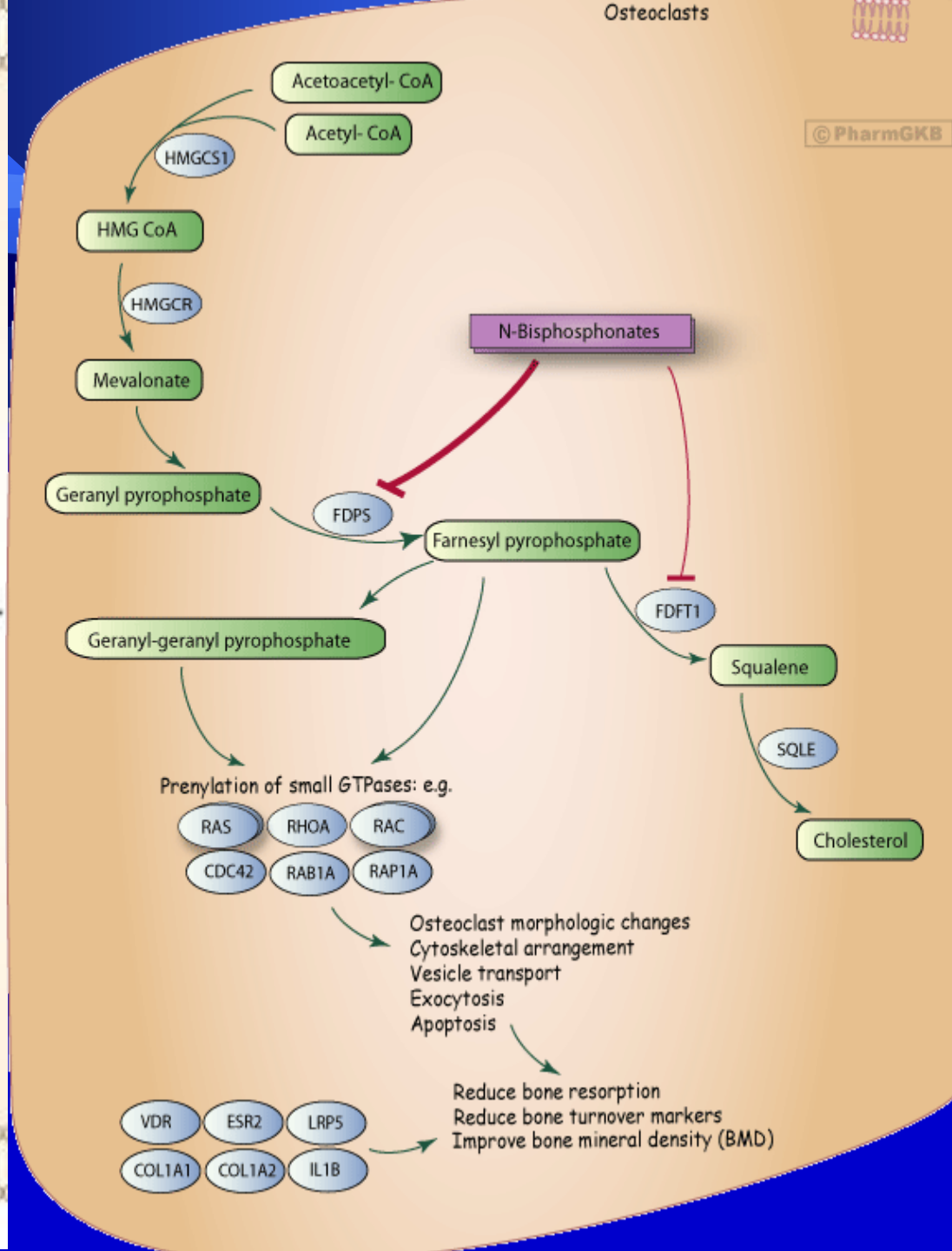
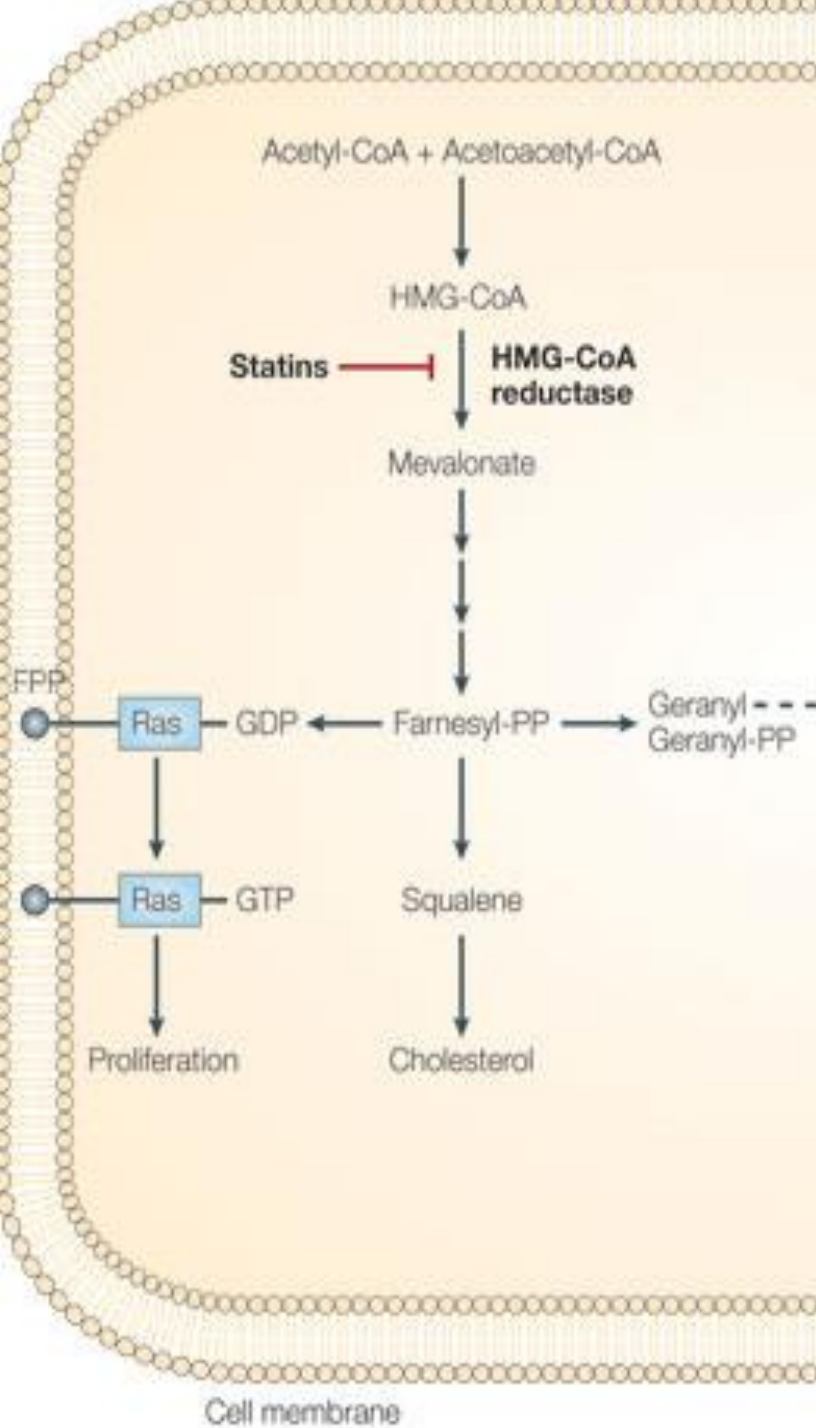
# Cholesterol Biosynthesis





# Bisphosphonates

- ◆ Bisphosphonates are commonly used to prevent and treat osteoporosis<sup>180,181</sup>
- ◆ Bisphosphonates inhibit key enzymes of the intracellular mevalonate pathway that are essential for the bone-resorbing activity and survival of osteoclasts<sup>180-182</sup>
- ◆ Bisphosphonates therapy suppresses normal bone remodeling to such an extent that endogenous bone repair is decreased leading to significantly increased “atypical” fracture risk<sup>183</sup>



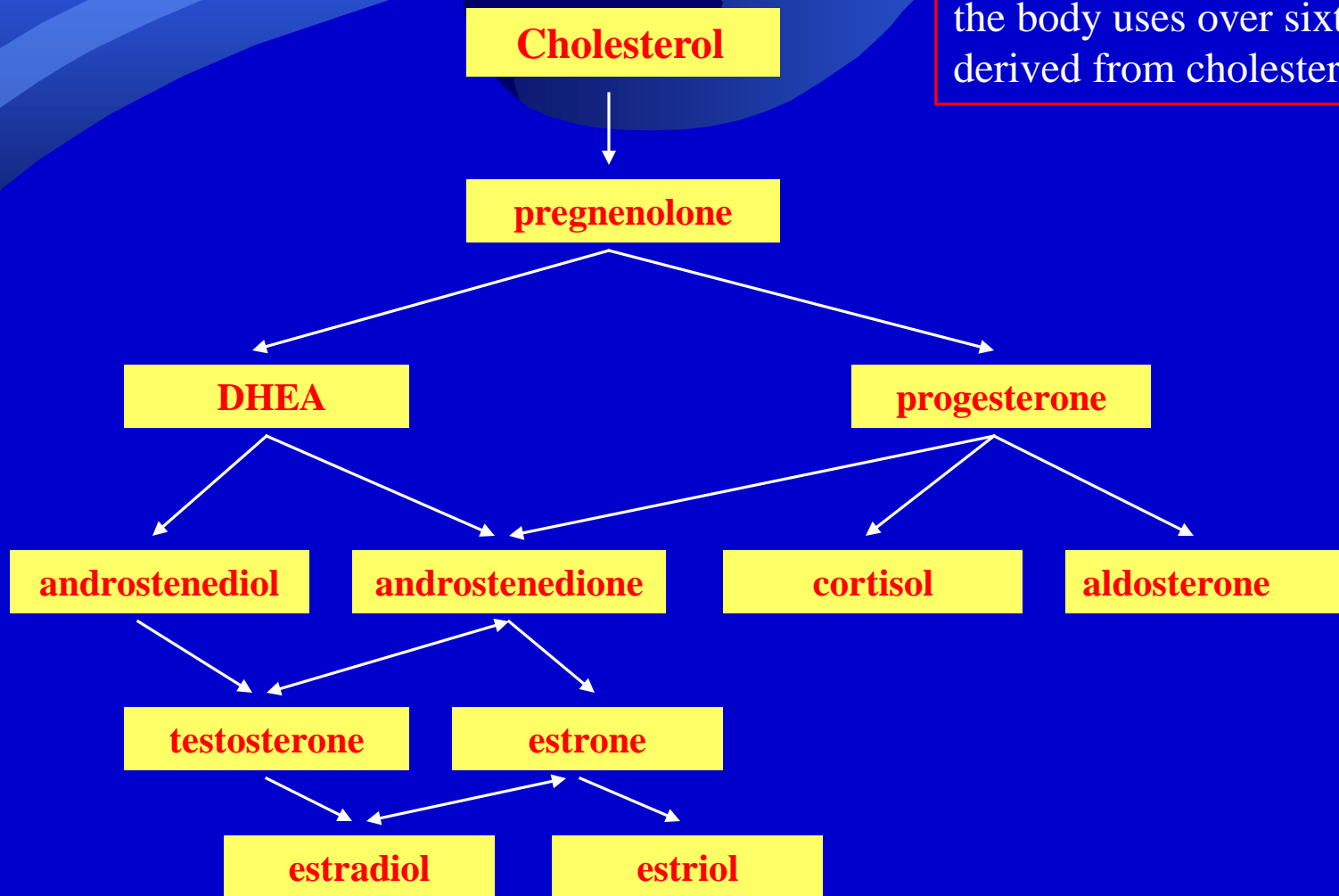
# Bisphosphonate side-effects<sup>184</sup>

- ◆ upper gastrointestinal tract adverse events
- ◆ renal toxicity
- ◆ ocular adverse events
- ◆ acute phase response - fever, chills, bone pain, myalgias and arthralgias
- ◆ hypocalcaemia and secondary hyperPTH
- ◆ musculoskeletal pain
- ◆ osteonecrosis of the jaw
- ◆ atrial fibrillation
- ◆ atypical fractures of the femoral diaphysis

# Metabolism of Cholesterol

(simplified version)

the body uses over sixty steroids  
derived from cholesterol



# New hypothesis of hypercholesterolemia: (hormonodeficient hypothesis of Hypercholesterolemia)<sup>156</sup>

---

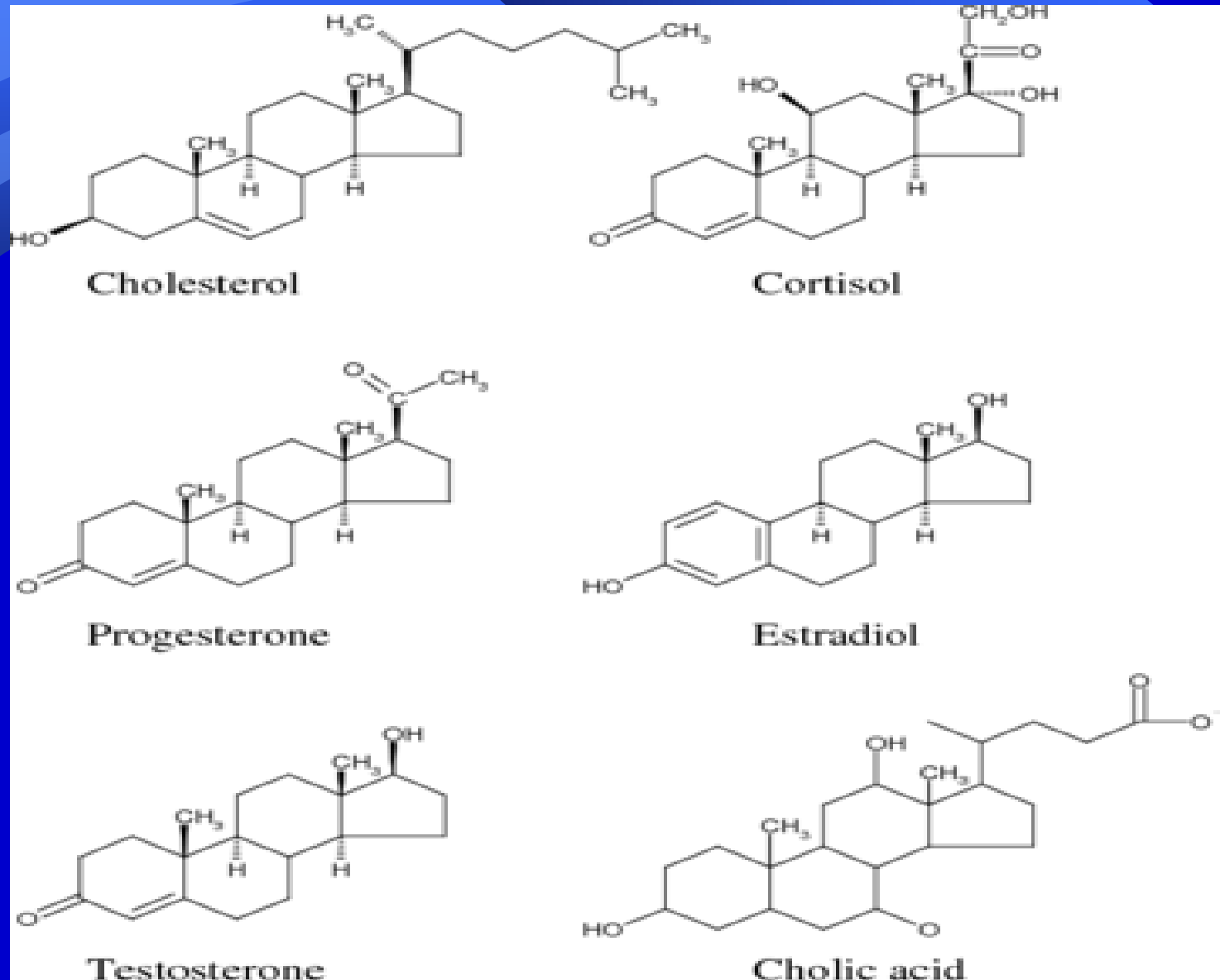
- ❖ this hypothesis implies that hypercholesterolemia is the reactive consequence of enzyme-dependent down regulation of steroid hormone biosynthesis and their interconversion
- ❖ in short, hypercholesterolemia is the compensatory mechanism for declined production of steroidal hormones

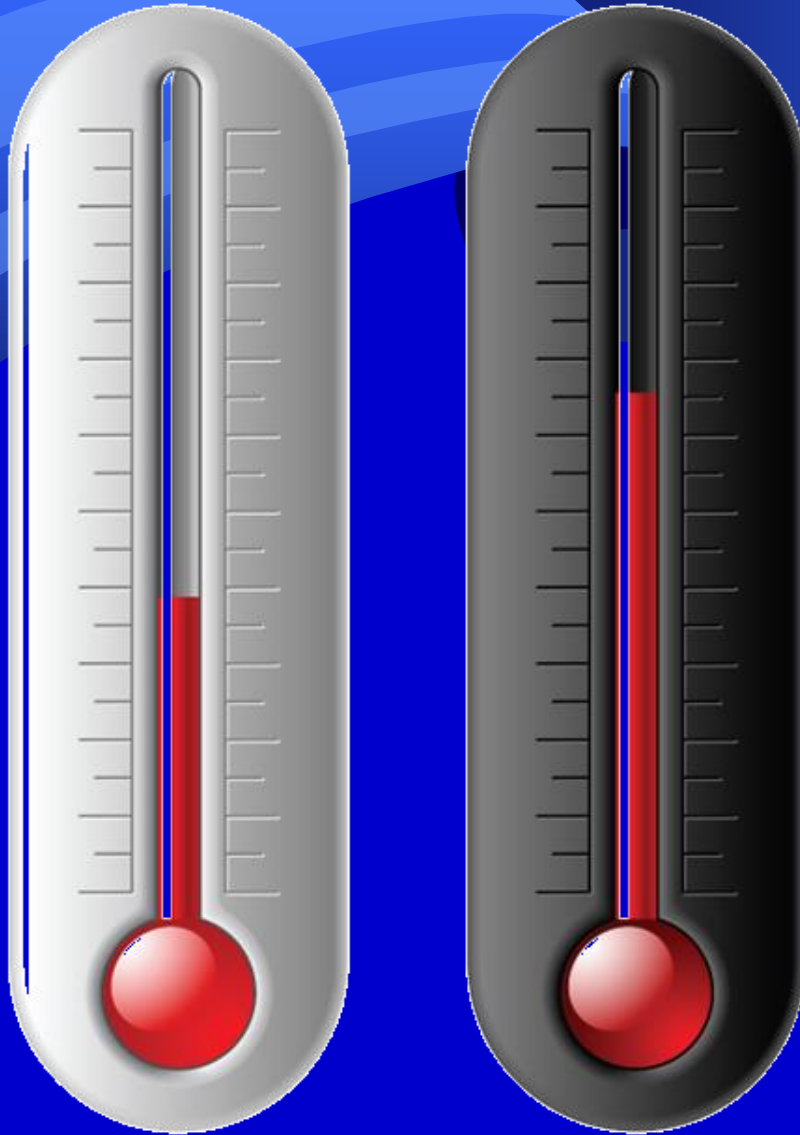
## Note!

We believe that:

- ◆ a high cholesterol level is a consequence of a low production of steroid hormones
- ◆ a low cholesterol level is a cause of a low steroid hormones production

All steroid hormones have a similar chemical structure





## Cholesterol is our Body's "Thermostat"

High cholesterol (as well as low cholesterol) is a sign that something is wrong.

TREATING CHOLESTEROL  
LIKE TREATING A FEVER  
DOES NOT TREAT THE CAUSE.

# The Relationship Between Cholesterol Lowering Drugs and Hormones

Diminished hormone production -> increased cholesterol

Diminished hormone production -> increased cholesterol + CLD

What do we have left?

Diminished hormone production

**To sum up:**

the original problem remains in full swing, but the cholesterol has been decreased.

**Remember:** cholesterol is not the cause, it is the effect.



# Side effect of statin drugs due to their method of effect

- ♦ CLD often lower cholesterol past the point where it was originally under the optimal system
- ♦ the effect on the chain of conversion for the creation of steroid hormones

example to illustrate this:

**X -> A -> B -> C -> D -> E -> F**

**X -> A -> B -> C -> D<sub>r</sub> -> E -> F**

**X -> A -> B -> C -> D<sub>r</sub> -> E<sub>r</sub> -> F<sub>r</sub>**

**S + X -> A<sub>r</sub> -> B<sub>r</sub> -> C<sub>r</sub> -> D<sub>r</sub> -> E<sub>r</sub> -> F<sub>r</sub>**

**X** being the progenitor (for our example cholesterol). Now let's say that unit **D** is malfunctioning, in this case we designate this condition with **r**.

Units **A**, **B**, and **C** are maintaining their status quo. Unit **D** is not. Units **E** and **F** are impaired in their production because their point of origin is a conversion from unit **D**. The chain can now be updated to reflect this.

**X** is increased to repair the link of **D**. That is the situation as we know it currently. What happens when statins, in this case **S**, are introduced?

Suddenly, the entire chain is compromised.

## Material and Method:<sup>178,179</sup>

- ◆ we retrospectively analyzed the results of two studies that included 155 patients with hypercholesterolemia

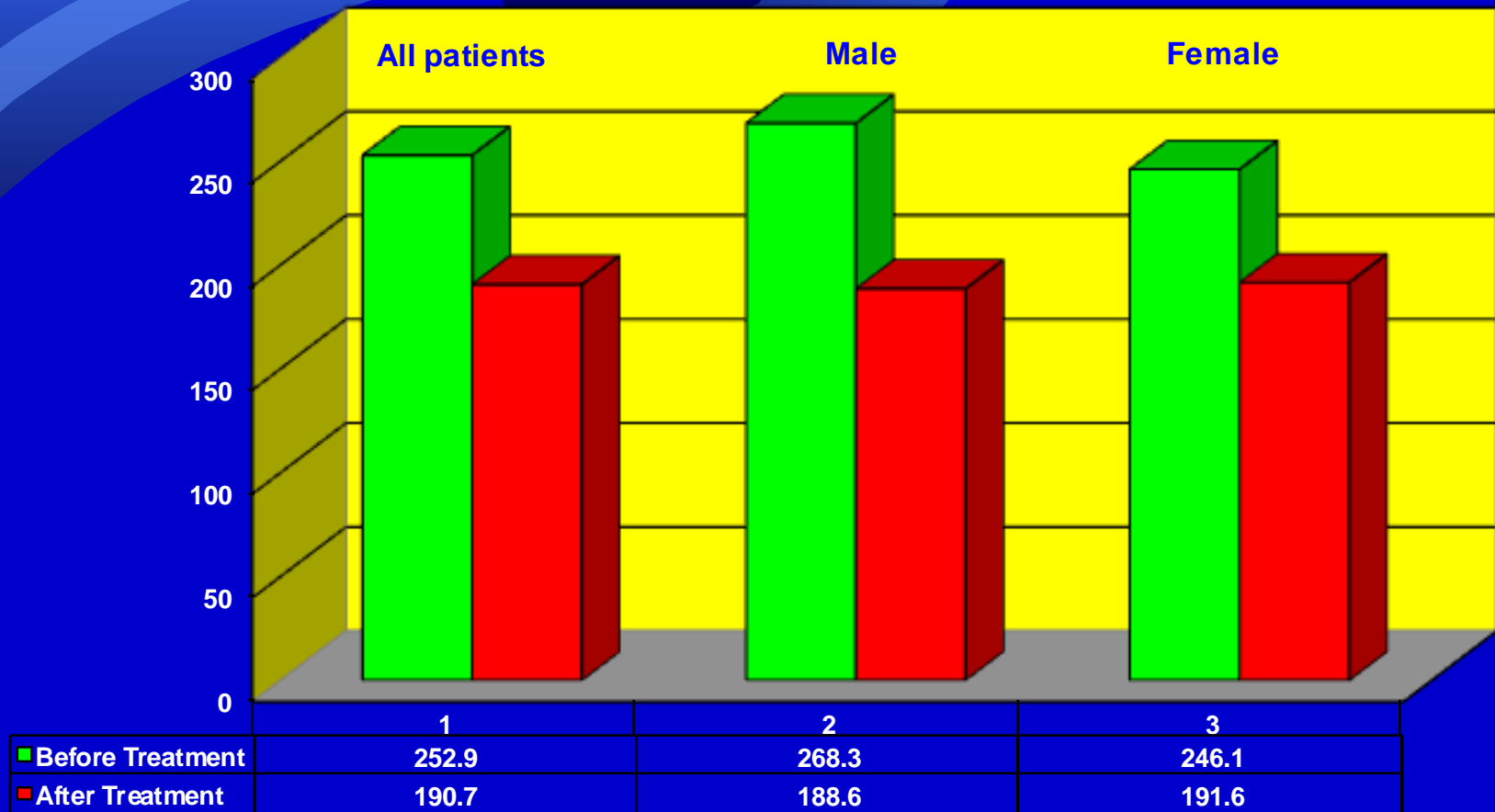
## Material and Method:<sup>178</sup>

- ♦ we analyzed 112 patients with hypercholesterolemia
- ♦ mean age – 54.2 (from 22 to 81yr)
- ♦ male to female ratio – 1:2.3 (34-78)
- ♦ follow up duration – 3-144 months

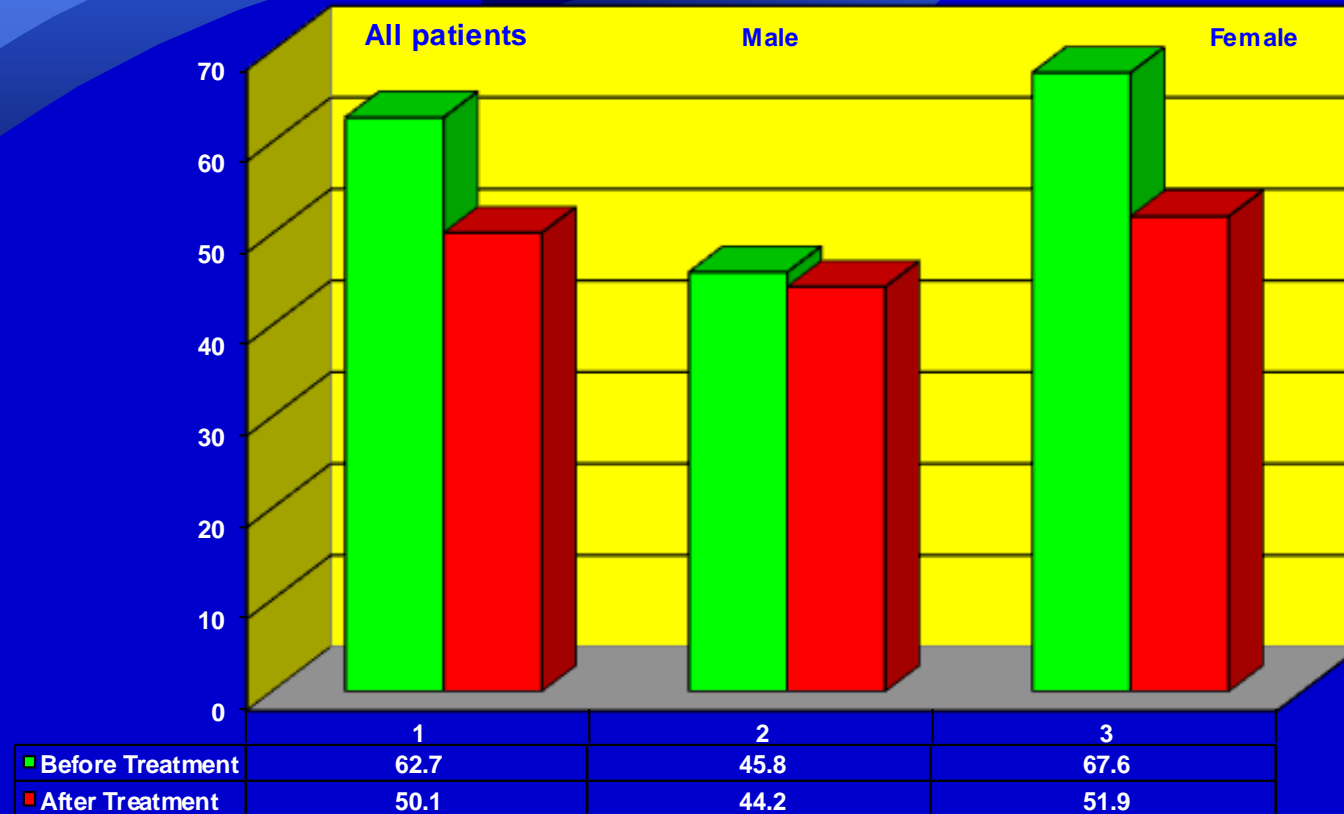
## Results:

- ♦ acute morbidity of HT was zero
- ♦ the mean serum TC decreased from 252.9 mg/dL before treatment to 190.7 mg/dL after intervention (dropped 24.6%)

# Total Cholesterol Before and After Hormonorestorative therapy



# HDL Before and After Hormonorestorative Therapy



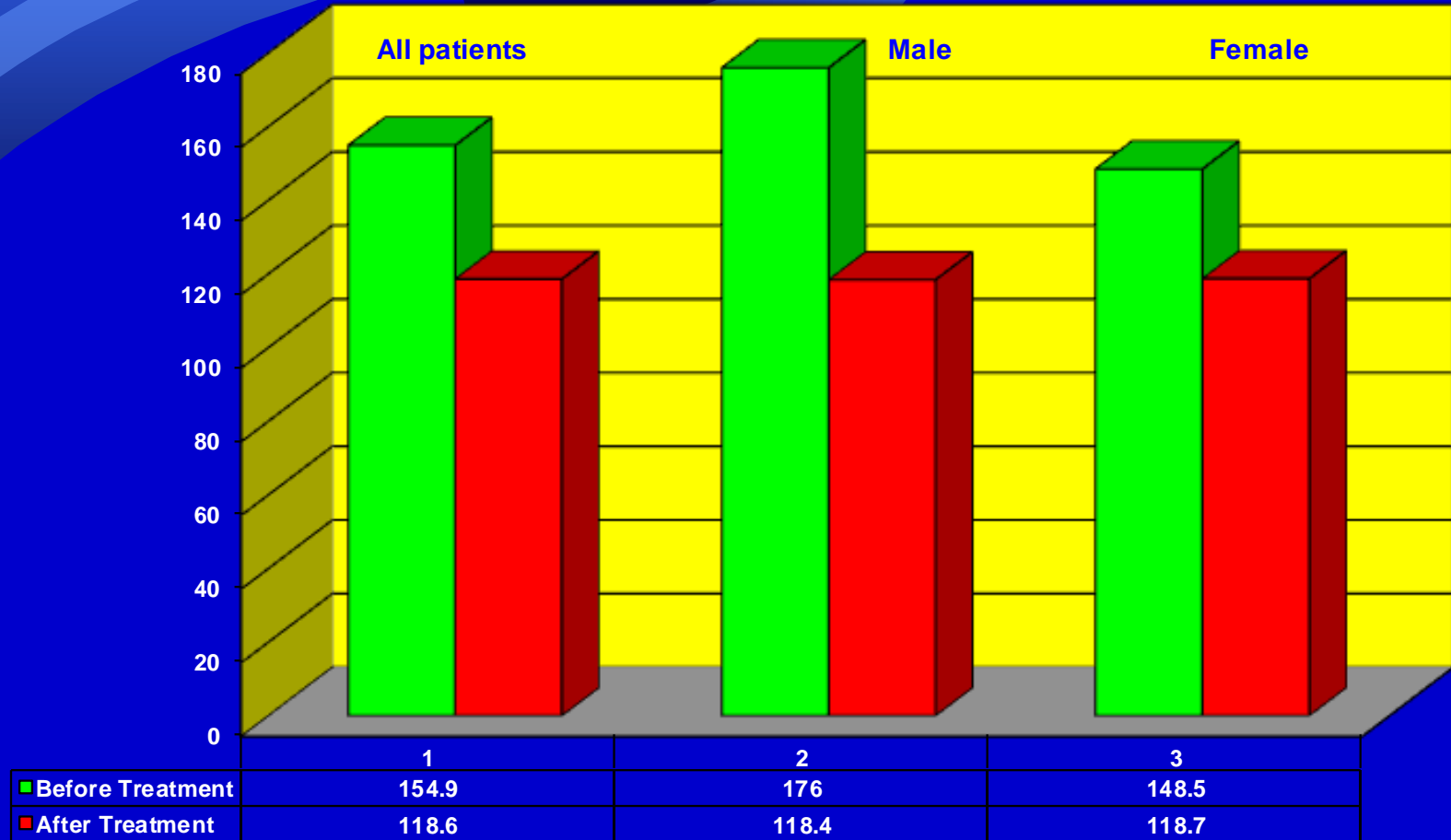
## Why decreasing HDL is a good sign during HT?

- ♦ If we normalize the level of TC, what reason is there for extra production of HDL? If there is nothing to transport back to the liver, why produce the extra carrier?
- ♦ HDL, by this logic, should decrease!

Our results can explain the failure of a new drug for the elevation of HDL from Pfizer – torcetrapib. As you know, this drug raised the risk of death by 59% and heart problems by 25%. It looks like elevated HDL is stealing supply of cholesterol from plants that must produce hormones.



# LDL Before and After Hormonorestorative Therapy



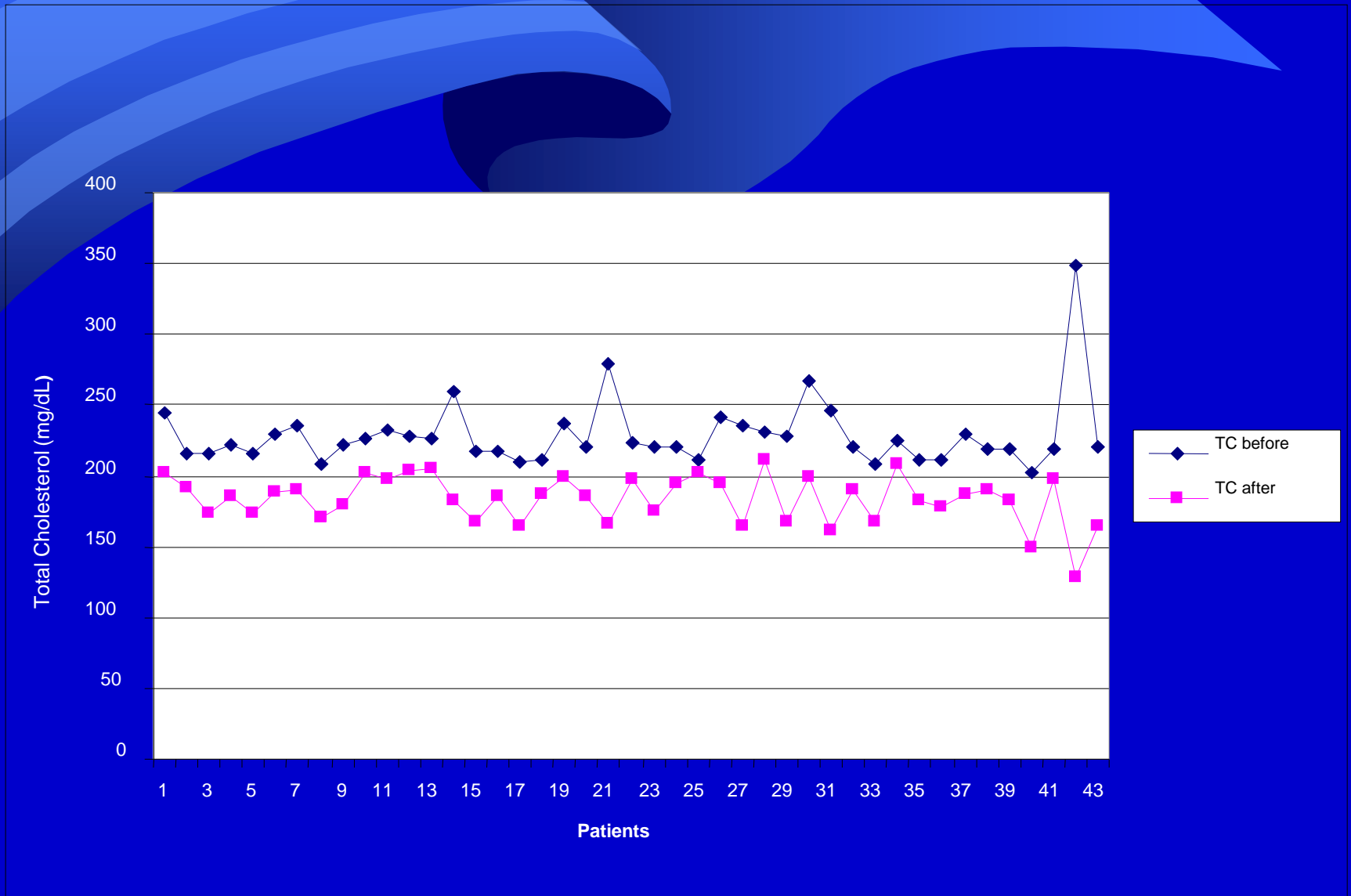
# Correction of Steroidopenia<sup>179</sup>

- ♦ we analyzed 43 patients
- ♦ mean age - 58.4 years
- ♦ 12 males and 31 females<sup>179</sup>

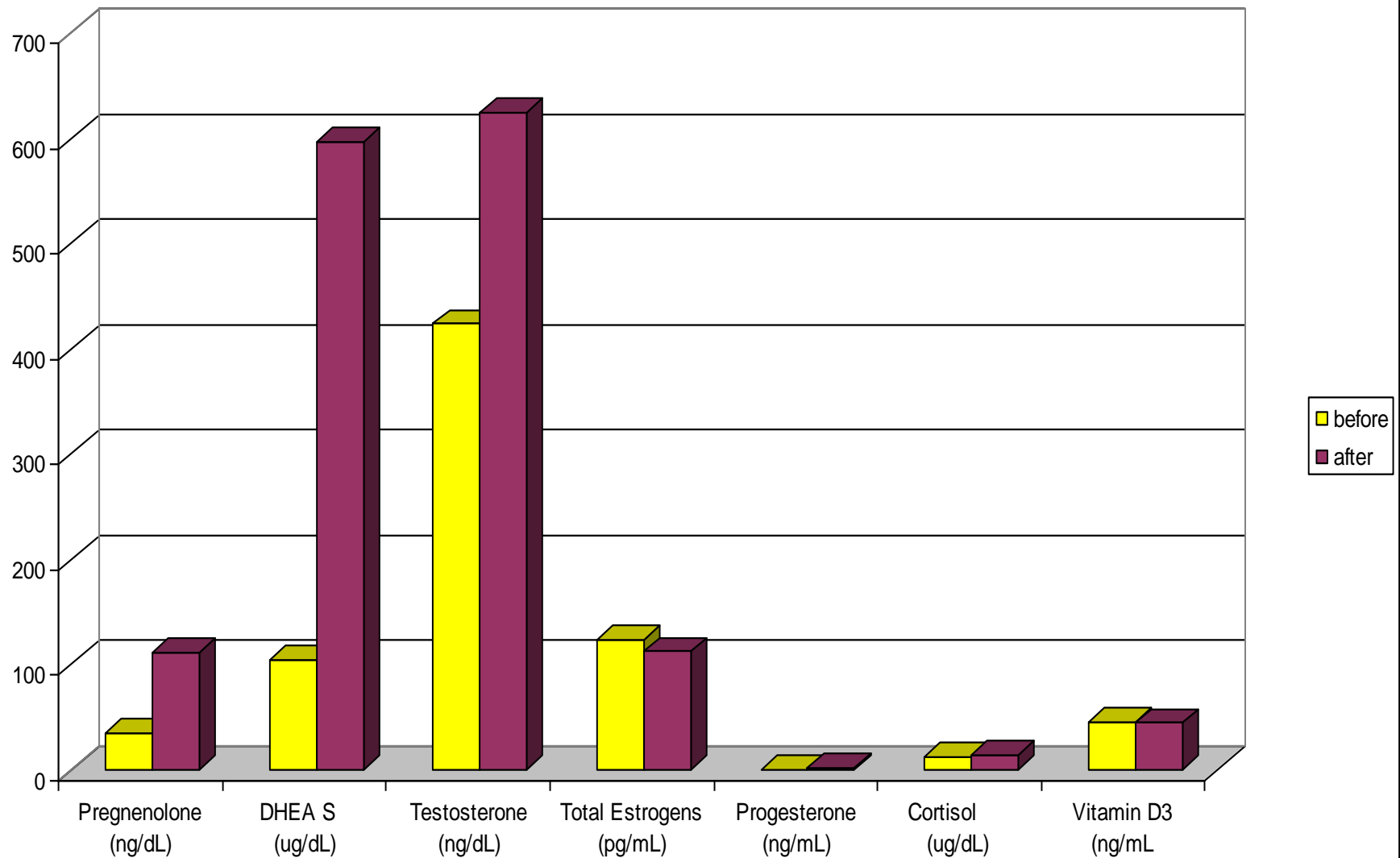
## Results:

- ✦ the mean serum TC decreased from 228.8 mg/dL before treatment to 183.7 mg/dL after intervention (dropped 19.7%)
- ✦ HT was associated with statistically significant elevations in pregnenolone, DHEA Sulfate, testosterone, progesterone, but not in total estrogen, cortisol, or vitamin D-3 in both men and women

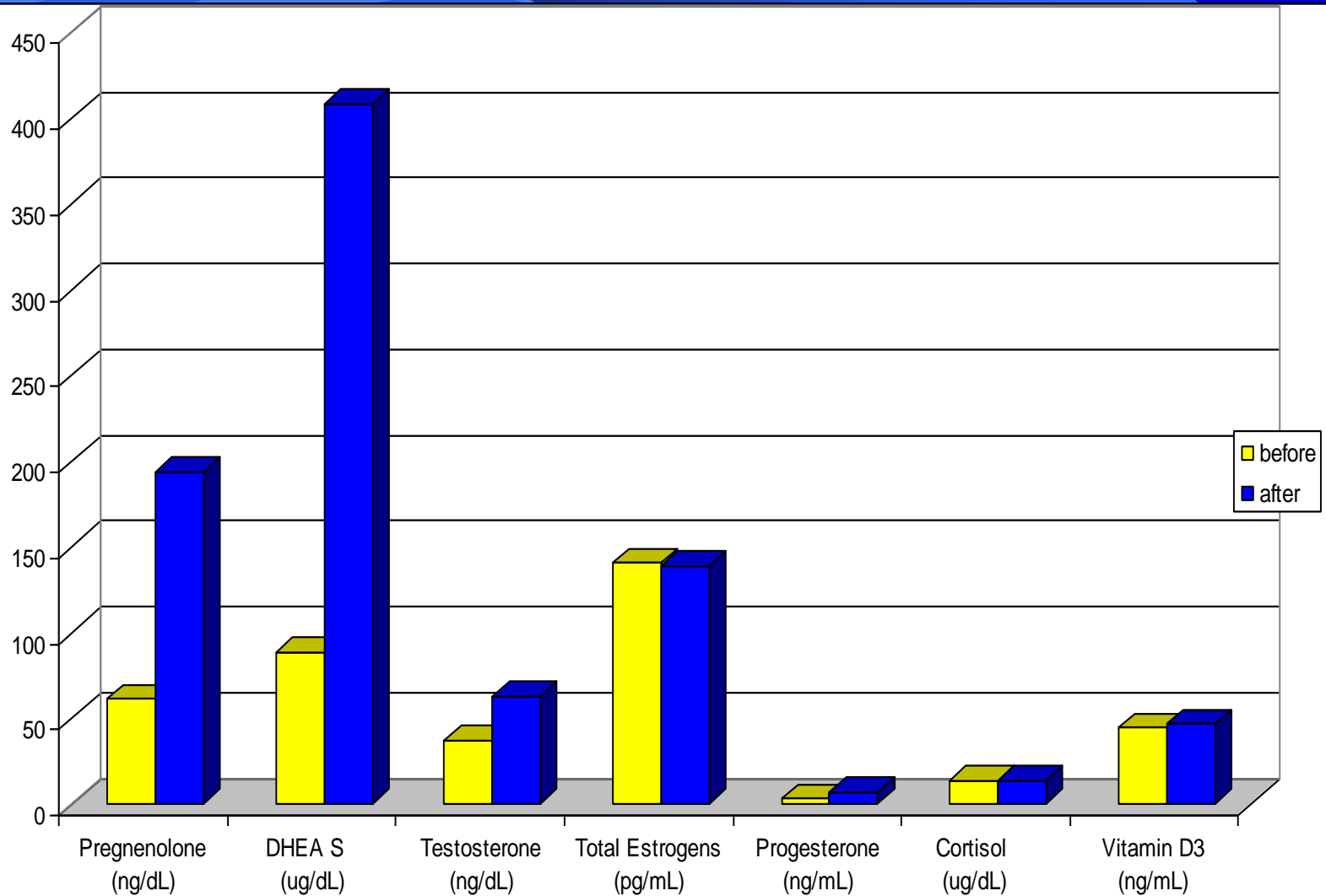
# Total Cholesterol Before and After Hormonorestorative therapy



# Steroid hormone levels in males before and after Hormonorestorative Therapy



# Steroid hormone levels in females before and after Hormonorestorative Therapy



## Effect of HT vs. cholesterol-lowering drugs on TC (mg/dL)

---

	before	after
NCMRCC (our study) <sup>157</sup>	252.0	192.8
FDIM, Osaka University (Japan) <sup>176</sup>	269.9	215.2

# CHD, MI and “normal cholesterol” level

---

- ❖ we know that, plasma cholesterol level increases with age, as does the incidence of CHD
- ❖ the most myocardial infarctions occur in patients who have normal TC levels;<sup>111</sup> the mean serum TC levels did not differ between the MI patients and the normal population<sup>112</sup>
- ❖ hypercholesterolemia was observed in 31-70% of patients with CHD<sup>4,113-116</sup>

*But how can we explain that up to 70 % of patients with CHD or MI have documented “normal” level of cholesterol?*



# What Is “Relative Hypercholesterolemia”?

---

Age

25

40

Patient 1

TC (nl <200 mg/dl)

130

190

Patient 2

TC (nl <200 mg/dl)

180

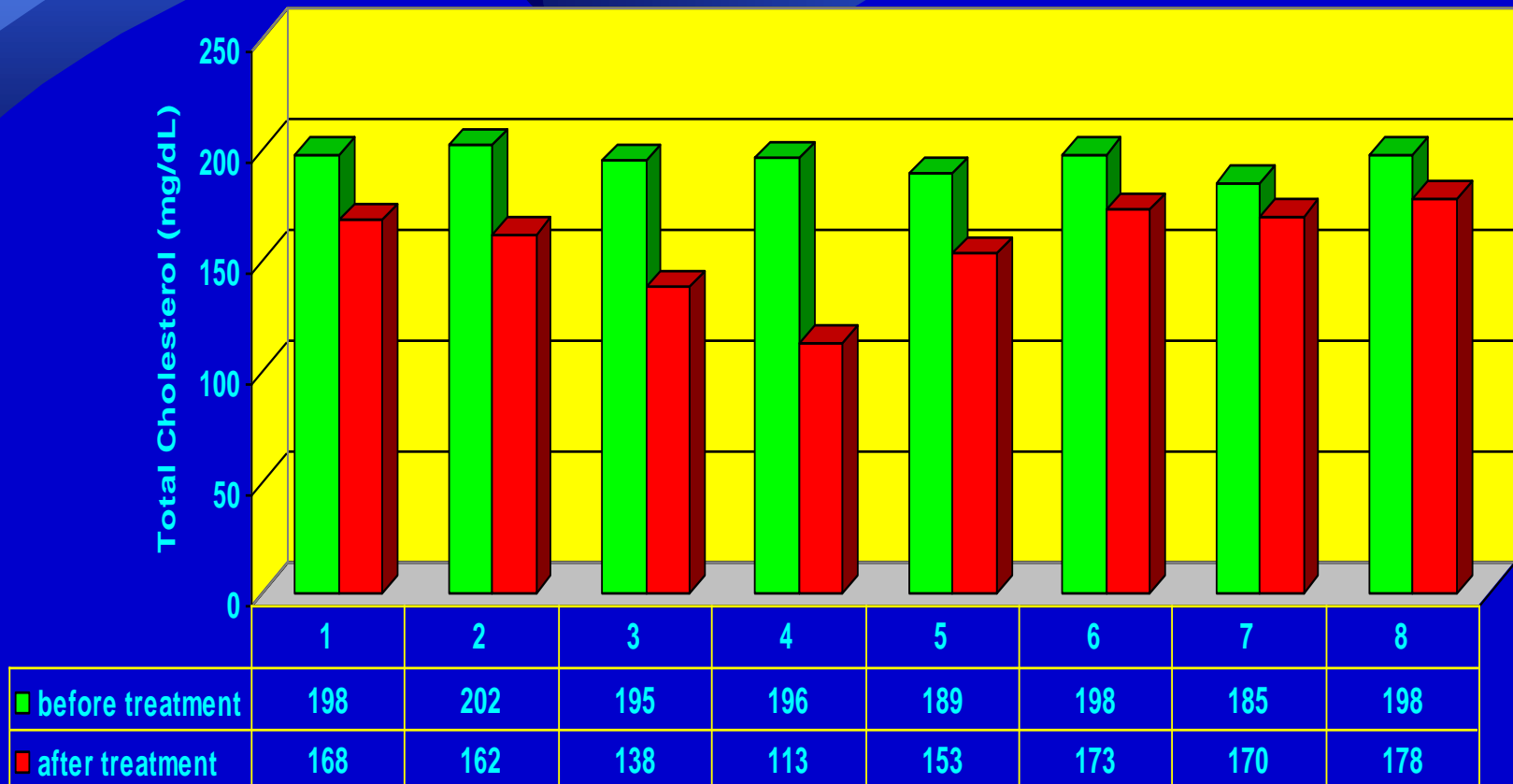
240

Life cycle related elevation of TC is 60 mg/dl in both cases.

**We hypothesize:** TC elevation over time is a critical determinant of risk for CHD or MI.

# “Relative Hypercholesterolemia”

(total cholesterol before and after hormone restorative therapy)



# Mechanism of action of HT

---

From our point of view HT restores a normal condition of all 3 regulation mechanisms:

- ✦ feedback regulation (through restoration of youthful level of basic steroidal hormones)
- ✦ hormonal regulation (through correction of insulin/glucagon balance)
- ✦ transcription regulation (through improvement of anabolic reactions)

# Summary on hypercholesterolemia

---

- ❖ hypercholesterolemia is a risk factor, not a cause of CHD
- ❖ steroidopenia is central to the mechanism of hypercholesterolemia related clinical disease
- ❖ cholesterol is an important marker of the health condition
- ❖ the purpose of cholesterol elevation is:
  - to increase production of steroid hormones and vitamin D3
  - to repair damaged cell structure (membrane); healing of damaged endothelium by the “plaquing” of tears and holes
  - to provide a normal response to physiologic demand (growth, pregnancy, stress, etc.)
- ❖ high concentration of cholesterol can lead to vascular damage with stenosis or occlusion of arteries if reason for elevation of cholesterol will not be corrected in time
- ❖ method of correction of elevated cholesterol with the use of CLD is wrong at the origin of the concept and has no physiologic foundation; CLD “fight” with consequence (high cholesterol) not a cause of hypercholesterolemia (low level of steroid hormones).

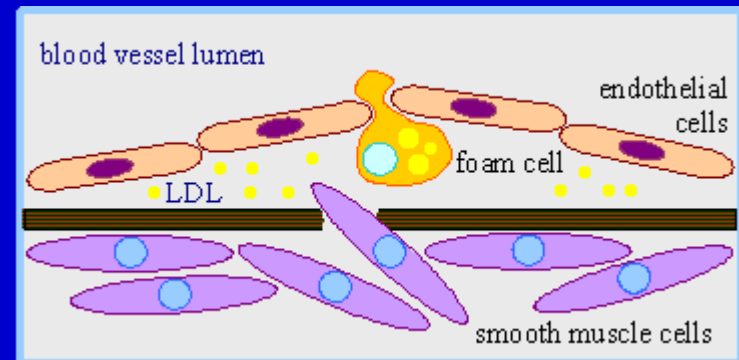
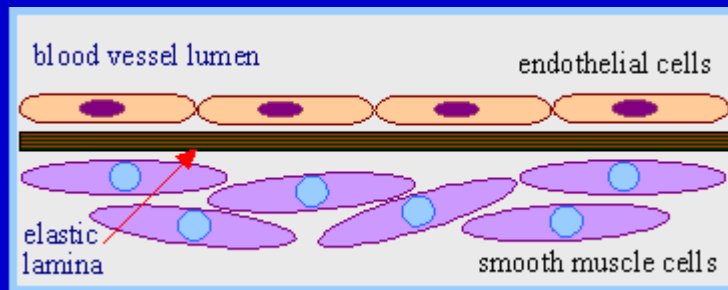
# Cholesterol and atherosclerosis

- ✦ In 1858 Virchow clearly showed that cholesterol does not *start* the process but that it is the *end* product of degeneration. Damage to the tissue became evident first, and then came an accumulation of fat, and finally, as the scar tissue was formed, a high content of cholesterol appeared. It was *part of the healing process* of a wound from damage caused by something else.
- ✦ Atherosclerosis is a disease primarily involves four cell types, i.e., endothelial and vascular smooth muscle cells, monocytes and platelets.<sup>185</sup> Arterial plaque contains a complex mixture of cholesterol, calcium, lipoproteins, mutated arterial cells, and fibrin.

It is well know that the composition of the atheroma is the same as for many granulation tissues which are interpreted as a healing process.<sup>186</sup>
- ✦ Cholesterol is important for normal repair of tissues since every cell membrane, and the organelles with the cells, are rich in cholesterol. Cholesterol is present along with fibrin, collagen, and elastin as a part of the repair process of lesions.

# Cholesterol and atherosclerosis (cont.)

- ✦ Arterial plaques begin as mutations to smooth muscle cells in the artery, which then proliferate, become fibrous, and eventually manufacture their own cholesterol.
- ✦ Anabolic influence in human metabolism decline with age. Age-related weakness of smooth muscle cells or infections may lead to endothelial injury. The process may followed by incomplete healing and lead to permanent damage of arterial wall.
- ✦ Endothelial cells impaired easier because weaker arterial muscular response on normal or elevated blood pressure due to increased peripheral vascular resistance and increased arterial wall stiffness because of aging.



# Cholesterol and atherosclerosis (cont.)

- ♦ why you do not afraid to use calcium for aging patients, but afraid cholesterol?!! ... even they both participate in formation of atherosclerotic plaques?!!
- ♦ the majority of doctors prescribe calcium even when patient has atherosclerosis, but suppress cholesterol!!

Where is the logic there?!

# The Role of Cholesterol in atherosclerosis – new hypothesis

❖ We hypothesized that:

- cholesterol is a one of the key component of repairing process
- atherosclerosis is a consequence of age-related metabolic shift from anabolic to catabolic, cause of tissue degeneration, including sarcopenia
- healing of endothelial and smooth muscle cells' microtrauma due to physical or chemical injuries is a cause of atherosclerosis
- atherosclerosis is physiologic adaptation to vascular injury

Like any product of bodily metabolism, cholesterol can be overproduced or misutilized with harmful effects.

Q: Why did increase the risk of hemorrhagic stroke during CLD use?

A: Because we suppress a “healing” ability of vascular wall.



# Case study 1: hypercholesterolemia

Patient E. 57 yr, male, first visit 08/31/00

Diagnosis: hypercholesterolemia, impotence, depression, insomnia.

Complaints: severe ED (since age 39), hypercholesterolemia, depression, fatigue, insomnia, short-term memory problems.

	TC	TRG	HDL	LDL	VLDL	TC/HDL
08/31/00	330	216	54	233	43	6.1
09/09/03	187	138	40	119	28	4.7



	DHEAS	Pregn	Estradiol	Progest	Test	Cortisol
(nl - age 20-30)	(280-640)	(10-200)	(0-53)	(0.3-1.2)	(280-830)	(4.3-22.4)
08/31/00	93	24	56	0.3	186	0.9
09/09/03	540	159	30	1.3	496	15.6

	DHT	Free Test	PSA
	(30-85)	(9.3-26.5)	(0-4)
08/31/00	44	1.01	1.1
09/09/03	38	19.6	0.8

follow up 09/09/03 – no complaints

## Case study 2: normocholesterolemia (“relative hypercholesterolemia”)

---

Patient G. 24 y.o. male, first visit 12/10/02

Diagnosis: ADHD, social anxiety disorder (SAD), major depression, insomnia.

Complaints: ADHD and SAD, no energy, tiredness, severe depression (in spite of Paxil), severe anxiety, no libido, erection problem, poor sex drive, decreased appetite, poor short-term memory, sleeping problems, frequent sinus infection and sore throat. TC was 140 mg/dL in 2000. ADHD was diagnosed around age 7 and SAD in age 14. Patient had been using Ritalin for several years. He was also on different antidepressants during the last 10 years.

	TC	DHEAS	Pregn	Test
	(<200)	(280-640 )	(10-200)	(241-827)
12/10/02	195	79	56	678
08/14/03	152	456	162	730

follow up 08/14/03

Complaints: none.

## Case study 3: hypocholesterolemia (food for thought)

### Remember:

Imbalance of hormones produced by our glands may happen at any age. Hormones are extremely important for mental health.

We want to stress the importance of blood test by demonstration of laboratory results assessment of 6 years old boy with the severe ADHD (this disorder was diagnosed in age 4).

TC	DHEAS	Pregn	Estradiol	Progest	Test
(100-169)	(<186)	(10-200)	(0-53)	(0.3-1.2)	(0-20)
108	<15	41	<10	0.4	16

The test revealed total cholesterol on low side and significantly decreased production of basic steroid hormones. There are no “cooling/calming” effect on testosterone there in matters of aggression and hyperactivity.

## Case study 4: hypocholesterolemia

---

Patient G. 29 y.o. female, first visit 07/23/99

Diagnosis: hypocholesterolemia, obesity, depression, menstrual disorder.

Complaints: overweight, fatigue, no energy, depression, anxiety, panic attacks, no libido, poor sex drive, very poor short-term memory, irregular menstrual cycle.

Weight - 242 pounds. Height 5'5". Body fat percentage (BFP) - 58% (nl 17-24%).

	TC	DHEAS	Pregn	Estr.(total)	Progest	Test
	(<200)	(65-380)	(10-230)	(61-437)	(0.2-28)	(14-76)
07/23/99	130	87	30	87	0.4	33
12/20/01	126	360	157	454	1.8	61

(blood was drawn in one week after menses completion in both cases)

follow up 12/20/01

Complaints: none. Weight - 146 lb. BFP -18%.

# Hope for Familial Hypercholesterolemia? (food for thought)

Familial hypercholesterolemia is associated with mutations affecting the LDL receptors. Cells lacking functional LDL receptors cannot take up LDL. As a result, the amount of circulating LDL increases.<sup>177</sup>

## Case study 5: familial hypercholesterolemia

Patient G. 38 y.o. male. (this case we managed “blindly”)

Diagnosis: familial hypercholesterolemia (familial combined hyperlipidemia)

Complaints: high total cholesterol (>500 mg/dL) and TRG > 1500 mg/dL

Diet: eats no red meat, no eggs, and everything fat free!

Wt - 225 lb    Ht - 5'11"

Program was initiated - October 2004 (no base line for hormones)

- After 3 months of taking a 50 mg DHEA, 100 mg pregnenolone, and 100 mg coenzyme Q-10 daily, patient agreed to do a lipid profile (refused to check his hormones). His TC was down to 318mg/dL, TRG – to 1085 mg/dL (01/07/05).

Certain ethnic groups have a much greater incidence of this genetic trait, with Ashkenazic (Eastern European) Jews, Afrikaner, French Canadians, Lebanese Christians, and Finns high up on the list.

## Case study 5 (cont.): familial hypercholesterolemia

---

- We suggested he takes 100 mg DHEA and 200 mg pregnenolone. Two months later (03/10/05), his TC was up to 412, and we asked him if he was taking the supplements regularly. He was not. We agreed to increase the pregnenolone to 300 mg, and after one month to 400 mg because severe short-term memory and joints problems.
- December 4, 2005 he donated blood and the results of his cholesterol test were stunning – 240! That was not even a fasting cholesterol test! He never had such a low level of cholesterol. Later (12/28/05) his hormones were tested, and fasting lipid profile was done:  
TC – 210 mg/dL, TRG – 518 mg/dL, testosterone – 274 ng/dL, estradiol – 55 pg/ml, DHEA-S – 919 ug/dL, pregnenolone - 113 ng/dL

That got me thinking...

it is not familial hypercholesterolemia per se, but rather familial low hormone production.

# New Hypothesis of Familial Hypercholesterolemia

**Familial hypercholesterolemia** is a compensatory reaction on a low production of steroid hormones due to congenital defect of the enzymes system responsible for the regulation of steroid hormone biosynthesis or their interconversions.

- ❖ malfunction of enzyme system leads to a low ability in production of the steroid hormones in spite of overproduction of cholesterol
- ❖ hypercholesterolemia developed as a normal response of feedback mechanism where deficiency of hormones serves as a start point in over production of cholesterol
- ❖ a high synthesis of cholesterol requires a significantly larger amount of LDL in the blood
- ❖ But...there is no need to increase the number of LDL-receptors on the cells' surface because of a low ability to produce hormones. Plus...synthesis of LDL receptors is suppressed by high intracellular cholesterol.<sup>177</sup> As a result, the amount of circulating LDL increases.
- ❖ The decreased synthesis of LDL receptors prevents excessive cholesterol uptake by cells. Otherwise cells will depot enormous amount of cholesterol without ability to use it for hormonal production due to enzymes failure. It may block a normal cells function.
- ❖ We think that this is the one of the possible defensive mechanism that prevents the overflooding of cells with cholesterol by keeping a low number of functioning LDL receptors.

# The Next Generation Cholesterol-Lowering Drugs

---

## proprotein convertase subtilisin kexin 9 (PCSK9)–inhibitor drugs

- ❖ PCSK9 drugs lower LDL. That fact is clear. But our target is not a lab value; it's heart disease
- ❖ in the OSLER and ODYSSEY studies new drugs [evolocumab (Repatha, Amgen) and alirocumab (Praluent, Sanofi/Regeneron)] showed a high level of negative neurocognitive effects. But follow-up was only 11 months in OSLER and 78 weeks in ODYSSEY. That's too short. Heart-disease prevention is not a 2-year endeavor.
- ❖ these drugs are guaranteed to cause harm. An enzyme called PCSK9 causes a degradation of the LDL receptor that rebinds to LDL. If you don't have that receptor, the cholesterol stays in your blood. By blocking this enzyme, you end up with more LDL receptors on the surface of the cell. The LDL can unbind to the cholesterol and bring it inside the cell.
- ❖ what you're going to end up with are these cells that are going to be chockfull of cholesterol. This drug is going to take cell function out of balance.



# Conclusion

---

- ❖ the results of our clinical study support a new hypothesis of hypercholesterolemia which implies that elevation of cholesterol is the compensatory mechanism for declined production of steroidal hormones
- ❖ hypercholesterolemia reflects a serious problem with steroidal hormones production and serves as an excellent marker which can be used to define the time when patients need to begin hormonorestorative therapy
- ❖ hormonorestorative therapy can serve as a decisive method in the management of hypercholesterolemia
- ❖ hormonorestorative therapy is an effective strategy for maintaining cholesterol homeostasis in patients characterized by hypercholesterolemia and sub-youthful serum steroidal hormones
- ❖ hormonorestitution is typically associated with a substantial drop in serum TC and could be a physiologic and inexpensive resource for the healthcare system

# References

---

1. Available at: [http://www.cdc.gov/nchs/data/nvsr/nvsr64/nvsr64\\_02.pdf](http://www.cdc.gov/nchs/data/nvsr/nvsr64/nvsr64_02.pdf) Accessed October 6, 2015.
2. Starfield B. Is US health really the best in the world? JAMA. 2000 Jul 26;284(4):483-5.
3. Available at: <http://www.health-care-reform.net/causedeath.htm> Accessed February 19, 2008.
4. Smith D. Cardiovascular disease: a historic perspective. Jpn J Vet Res. 2000 Nov;48(2-3):147-66.
5. Jacobson TA. Clinical context: current concepts of coronary heart disease management. Am J Med. 2001 Apr 16;110 Suppl 6A:3S-11S.
6. Brochier ML, Arwidson P. Coronary heart disease risk factors in women. Eur Heart J. 1998 Feb;19 Suppl A:A45-52.
7. Lewis V, Hoeger K. Prevention of coronary heart disease: a nonhormonal approach. Semin Reprod Med. 2005 May;23(2):157-66.
8. Samánek M, Urbanová Z. Cholesterol and triglyceride levels and their development from 2 to 17 years of age. Cas Lek Cesk. 1997 Jun 12;136(12):380-5.
9. Available at: <http://www.pharmacy.umn.edu/img/assets/10745/Hypercholesterolemia%20Care%20Plan.pdf> Accessed February 19, 2008.
10. Yang YH, Kao SM, Chan KW. A retrospective drug utilization evaluation of antihyperlipidaemic agents in a medical centre in Taiwan. J Clin Pharm Ther. 1997 Aug;22(4):291-9.
11. Schuff-Werner P, Kohlschein P. Current therapy of hypercholesterolemia. How much statin does your patient need? MMW Fortschr Med. 2002 Aug 8;144(31-32):24-6.
12. Manzoli A, Patti G, D'Ambrosio A, et al. Statins: from hypocholesteremic drugs to antiatherogenic agents. Clin Ter. 2001 Sep-Oct;152(5):307-13.

# References

---

13. Geiss HC, Parhofer KG, Schwandt P. Atorvastatin compared with simvastatin in patients with severe LDL hypercholesterolaemia treated by regular LDL apheresis. *J Intern Med*. 1999 Jan;245(1):47-55.
14. Gaist D, Jeppesen U, Andersen M, et al. Statins and risk of polyneuropathy: a case-control study. *Neurology*. 2002 May 14;58(9):1333-7.
15. Gould AL, Rossouw JE, Santanello NC, et al. Cholesterol reduction yields clinical benefit. A new look at old data. *Circulation*. 1995 Apr 15;91(8):2274-82.
16. Papassotiropoulos A, Hawellek B, Frahnert C, et al. The risk of acute suicidality in psychiatric inpatients increases with low plasma cholesterol. *Pharmacopsychiatry*. 1999 Jan;32(1):1-4.
17. Pignone M, Phillips C, Mulrow C. Use of lipid lowering drugs for primary prevention of coronary heart disease: meta-analysis of randomised trials. *BMJ*. 2000 Oct 21;321(7267):983-6.
18. Deller M, Huth K. Prevention of coronary heart disease by therapy of hyperlipidemia. Between cholesterol hysteria and therapeutic realism. *Fortschr Med*. 1992 Sep 10;110(25):463-6.
19. Deedwania P, Barter P, Carmena R, et al. Reduction of low-density lipoprotein cholesterol in patients with coronary heart disease and metabolic syndrome: analysis of the Treating to New Targets study. *Lancet* 2006;368:919-28.
20. Horlitz M, Sigwart U, Niebauer J. Statins do not prevent restenosis after coronary angioplasty: where to go from here? *Herz*. 2001 Mar;26(2):119-28.
21. Smith GD, Song F, Sheldon TA. Cholesterol lowering and mortality: the importance of considering initial level of risk. *BMJ*. 1993 May 22;306(6889):1367-73.
22. Ravnskov U. Cholesterol lowering trials in coronary heart disease: frequency of citation and outcome. *BMJ*. 1992 Jul 4;305(6844):15-9.
23. Ravnskov U. Frequency of citation and outcome of cholesterol lowering trials. *BMJ*. 1992 Sep 19;305(6855):717.

# References

---

24. Geurian KL. The cholesterol controversy. *Ann Pharmacother*. 1996 May;30(5):495-500.
25. Boston PF, Dursun SM, Reveley MA. Cholesterol and mental disorder. *Br J Psychiatry*. 1996 Dec;169(6):682-9.
26. Law MR, Thompson SG, Wakd NJ. Assessing possible hazards of reducing serum cholesterol. *BMJ*. 1994 Feb 5;308(6925):373-9.
27. Newman TB, Hulley SB. Carcinogenicity of lipid-lowering drugs. *JAMA*. 1996 Jan 3;275(1):55-60.
28. Childs M, Girardot G. Evaluation of acquired data on long-term risk of hypolipidemic treatments. *Arch Mal Coeur Vaiss*. 1992 Sep;85 Spec No 2:129-33.
29. Goldstein MR, Mascitelli L. Do statins decrease cardiovascular disease at the expense of increasing cancer? *Int J Cardiol*. 2007 Dec 28 [Epub ahead of print]
30. Ormiston T, Wolkowitz OM, Reus VI, et al. Hormonal changes with cholesterol reduction: a double-blind pilot study. *J Clin Pharm Ther*. 2004 Feb;29(1):71-3.
31. Hall SA, Page ST, Travison TG, et al. Do statins affect androgen levels in men? Results from the Boston area community health survey. *Cancer Epidemiol Biomarkers Prev*. 2007 Aug;16(8):1587-94.
32. Izquierdo D, Foyouzi N, Kwintkiewicz J, Duleba AJ. Mevastatin inhibits ovarian theca-interstitial cell proliferation and steroidogenesis. *Fertil Steril*. 2004 Oct;82 Suppl 3:1193-7.
33. Mastroberardino G, Costa C, Gavelli MS, et al. Plasma cortisol and testosterone in hypercholesterolaemia treated with clofibrate and lovastatin. *J Int Med Res*. 1989 Jul-Aug;17(4):388-94.
34. Chung N, Cho SY, Choi DH, et al. STATT: a titrate-to-goal study of simvastatin in Asian patients with coronary heart disease. *Simvastatin Treats Asians to Target*. *Clin Ther*. 2001 Jun;23(6):858-70.
35. Hunninghake D, Insull W, Knopp R, et al. Comparison of the efficacy of atorvastatin versus cerivastatin in primary hypercholesterolemia. *Am J Cardiol*. 2001 Sep 15;88(6):635-9.

# References

---

36. Bakker-Arkema RG, Nawrocki JW, Black DM. Safety profile of atorvastatin-treated patients with low LDL-cholesterol levels. *Atherosclerosis*. 2000 Mar;149(1):123-9.
37. Wierzbicki AS, Lumb PJ, Semra Y, et al. Atorvastatin compared with simvastatin-based therapies in the management of severe familial hyperlipidaemias. *QJM*. 1999 Jul;92(7):387-94.
38. McPherson R, Hanna K, Agro A, et al. Cerivastatin versus branded pravastatin in the treatment of primary hypercholesterolemia in primary care practice in Canada: a one-year, open-label, randomized, comparative study of efficacy, safety, and cost-effectiveness. *Clin Ther*. 2001 Sep;23(9):1492-507.
39. McKenney JM. New guidelines for managing hypercholesterolemia. *J Am Pharm Assoc (Wash)*. 2001 Jul-Aug;41(4):596-607.
40. Simons LA, Levis G, Simons J. Apparent discontinuation rates in patients prescribed lipid-lowering drugs. *Med J Aust*. 1996 Feb 19;164(4):208-11.
41. Tomlinson B, Chan P, Lan W. How well tolerated are lipid-lowering drugs? *Drugs Aging*. 2001;18(9):665-83.
42. Jacquet A, Colomes M, Ferrieres J, et al. A one-year prospective and intensive pharmacovigilance of antilipemic drugs in an hospital consultation for prevention of risk factors. *Therapie*. 1993 Sep-Oct;48(5):509-12.
43. Chang JT, Staffa JA, Parks M, Green L. Rhabdomyolysis with HMG-CoA reductase inhibitors and gemfibrozil combination therapy. *Pharmacoepidemiol Drug Saf*. 2004 Jul;13(7):417-26.
44. Scheen AJ. Fatal rhabdomyolysis caused by cerivastatin. *Rev Med Liege*. 2001 Aug;56(8):592-4.
45. Borrego FJ, Liébana A, Borrego J, et al. Rhabdomyolysis and acute renal failure secondary to statins. *Nefrologia*. 2001 May-Jun;21(3):309-13.
46. Omar MA, Wilson JP, Cox TS. Rhabdomyolysis and HMG-CoA reductase inhibitors. *Ann Pharmacother*. 2001 Sep;35(9):1096-107.

# References

---

47. Sirvent P, Mercier J, Lacampagne A. New insights into mechanisms of statin-associated myotoxicity. *Curr Opin Pharmacol*. 2008 Jan 31 [Epub ahead of print]
48. Tiwari A, Bansal V, Chugh A, Mookhtiar K. Statins and myotoxicity: a therapeutic limitation. *Expert Opin Drug Saf*. 2006 Sep;5(5):651-66.
49. Available at: [http://baycollitigation.com/news/news\\_page\\_3.htm](http://baycollitigation.com/news/news_page_3.htm) Accessed February 19, 2008.
50. Available at: <http://www.anma.org/mon62.html> Accessed February 19, 2008.
51. Silver MA, Langsjoen PH, Szabo S, et al. Statin cardiomyopathy? A potential role for Co-Enzyme Q10 therapy for statin-induced changes in diastolic LV performance: description of a clinical protocol. *Biofactors*. 2003;18(1-4):125-7.
52. Walsh KM, Albassam MA, Clarke DE. Subchronic toxicity of atorvastatin, a hydroxymethylglutaryl-coenzyme A reductase inhibitor, in beagle dogs. *Toxicol Pathol*. 1996 Jul-Aug;24(4):468-76.
53. von Keutz E, Schlüter G. Preclinical safety evaluation of cerivastatin, a novel HMG-CoA reductase inhibitor. *Am J Cardiol*. 1998 Aug 27;82(4B):11J-17J.
54. Farnsworth WH, Hoeg JM, Maher M, et al. Testicular function in type II hyperlipoproteinemic patients treated with lovastatin (mevinolin) or neomycin. *J Clin Endocrinol Metab*. 1987 Sep;65(3):546-50.
55. Rizvi K, Hampson JP, Harvey JN. Do lipid-lowering drugs cause erectile dysfunction? A systematic review. *Fam Pract*. 2002 Feb;19(1):95-8.
56. Carvajal A, Macias D, Sáinz M, et al. HMG CoA reductase inhibitors and impotence: two case series from the Spanish and French drug monitoring systems. *Drug Saf*. 2006;29(2):143-9.
57. Muldoon MF, Ryan CM, Flory JD, Manuck SB. Effects of simvastatin on cognitive functioning. Presented at the American Heart Association Scientific Sessions. Chicago, IL, USA; 2002, Nov. 17-20.



# References

---

58. Wagstaff LR, Mitton MW, Arvik BM, Doraiswamy PM. Statin-associated memory loss: analysis of 60 case reports and review of the literature. *Pharmacotherapy*. 2003 Jul;23(7):871-80.
59. King DS, Wilburn AJ, Wofford MR, et al. Cognitive impairment associated with atorvastatin and simvastatin. *Pharmacotherapy*. 2003 Dec;23(12):1663-7.
60. Orsi A, Sherman O, Woldelessie Z. Simvastatin-associated memory loss. *Pharmacotherapy*. 2001 Jun;21(6):767-9.
61. Gaist D, García Rodríguez LA, Huerta C, et al. Are users of lipid-lowering drugs at increased risk of peripheral neuropathy? *Eur J Clin Pharmacol*. 2001 Mar;56(12):931-3.
62. Golomb BA, Kane T, Dimsdale JE. Severe irritability associated with statin cholesterol-lowering drugs. *QJM*. 2004 Apr;97(4):229-35.
63. Posvar EL, Radulovic LL, Cilla DD Jr, et al. Tolerance and pharmacokinetics of single-dose atorvastatin, a potent inhibitor of HMG-CoA reductase, in healthy subjects. *J Clin Pharmacol*. 1996 Aug;36(8):728-31.
64. Ahmad A, Fletcher MT, Roy TM. Simvastatin-induced lupus-like syndrome. *Tenn Med*. 2000 Jan;93(1):21-2.
65. Cromwell WC, Ziajka PE. Development of tachyphylaxis among patients taking HMG CoA reductase inhibitors. *Am J Cardiol*. 2000 Nov 15;86(10):1123-7.
66. Bennett RM. Fibromyalgia: the commonest cause of widespread pain. *Compr Ther*. 1995 Jun;21(6):269-75.
67. Reiffenberger DH, Amundson LH. Fibromyalgia syndrome: a review. *Am Fam Physician*. 1996 Apr;53(5):1698-712.
68. Olin R. Fibromyalgia. A neuro-immuno-endocrinologic syndrome? *Lakartidningen*. 1995 Feb 22;92(8):755-8, 761-3.
69. Barrett-Connor E, Khaw KT, Yen SS. A prospective study of dehydroepiandrosterone sulfate, mortality, and cardiovascular disease. *N Engl J Med*. 1986 Dec 11;315(24):1519-24.

# References

---

70. Perrone G, Stefanutti C, Galoppi P, et al. Effect of oral and transdermal hormone replacement therapy on lipid profile and Lp(a) level in menopausal women with hypercholesterolemia. *J Fertil Menopausal Stud.* 1996 Nov-Dec;41(6):509-15.
71. Ettinger B. Overview of the efficacy of hormonal replacement therapy. *Am J Obstet Gynecol.* 1987 May;156(5):1298-303.
72. Bongard V, Ferrières J, Ruidavets JB, et al. Transdermal estrogen replacement therapy and plasma lipids in 693 French women. *Maturitas.* 1998 Nov 16;30(3):265-72.
73. Averbuch M, Ayalon D, Eckstein N, et al. Hormone replacement and simvastatin in the therapy of hypercholesterolemic postmenopausal women. *J Med.* 1998;29(5-6):343-50.
74. Wolfe BM, Nisker JA, Hutton LC, Rutt BK. Novel low-dosage hormonal replacement therapy complements dietary treatment of moderately hypercholesterolemic postmenopausal women. *Clin Invest Med.* 1995 Oct;18(5):362-9.
75. Schlegel W, Müller H, Ebert C, et al. Estrogen substitution: effects on lipid, eicosanoid and collagen metabolism in menopause. *Zentralbl Gynakol.* 1994;116(3):179-84.
76. Dallongeville J, Marecaux N, Isorez D, et al. Multiple coronary heart disease risk factors are associated with menopause and influenced by substitutive hormonal therapy in a cohort of French women. *Atherosclerosis.* 1995 Nov;118(1):123-33.
77. Medina RA, Aranda E, Verdugo C, et al. The action of ovarian hormones in cardiovascular disease. *Biol Res.* 2003;36(3-4):325-41.
78. Bachmann GA. Androgen cotherapy in menopause: evolving benefits and challenges. *Am J Obstet Gynecol.* 1999 Mar;180(3 Pt 2):S308-11.
79. Regelson W. The superhormone promise. *New York, NY, USA;*1997;117.
80. Mårin P, Holmäng S, Jönsson L, et al. The effects of testosterone treatment on body composition and metabolism in middle-aged obese men. *Int J Obes Relat Metab Disord.* 1992 Dec;16(12):991-7.



# References

---

81. Hromadová M, Hácik T, Malatinský E, et al. Lipid metabolism in young males with hypotestosteronaemia and oligospermia prior to, during, and after treatment. *Int Urol Nephrol*. 1991;23(1):69-75.
82. Haug A, Høstmark AT, Spydevold O. Plasma lipoprotein responses to castration and androgen substitution in rats. *Metabolism*. 1984 May;33(5):465-70.
83. Regelson W, Loria R, Kalimi M. Hormonal intervention: "buffer hormones" or "state dependency". The role of dehydroepiandrosterone (DHEA), thyroid hormone, estrogen and hypophysectomy in aging. *Ann N Y Acad Sci*. 1988;521:260-73.
84. Ly LP, Jimenez M, Zhuang TN, et al. A double-blind, placebo-controlled, randomized clinical trial of transdermal dihydrotestosterone gel on muscular strength, mobility, and quality of life in older men with partial androgen deficiency. *J Clin Endocrinol Metab*. 2001 Sep;86(9):4078-88.
85. Mosca LJ. Contemporary management of hyperlipidemia in women. *J Womens Health Gend Based Med*. 2002 Jun;11(5):423-32.
86. Jacobs DR Jr, Iribarren C. Invited commentary: low cholesterol and nonatherosclerotic disease risk: a persistently perplexing question. *Am J Epidemiol*. 2000 Apr 15;151(8):748-51.
87. Martin U, Davies C, Hayavi S, et al. Is normal pregnancy atherogenic? *Clin Sci (Lond)*. 1999 Apr;96(4):421-5.
88. Warth MR, Arky RA, Knopp RH. Lipid metabolism in pregnancy. II. Altered lipid composition in intermediage, very low, low and high-density lipoprotein fractions. *J Clin Endocrinol Metab*. 1975 Oct;41(4):649-55.
89. Sitadevi C, Patrudu MB, Kumar YM, et al. Longitudinal study of serum lipids and lipoproteins in normal pregnancy and puerperium. *Trop Geogr Med*. 1981 Sep;33(3):219-23.
90. Brizzi P, Tonolo G, Esposito F, et al. Lipoprotein metabolism during normal pregnancy. *Am J Obstet Gynecol*. 1999 Aug;181(2):430-4.

# References

---

91. Troisi A, Moles A, Panepuccia L. et al. Serum cholesterol levels and mood symptoms in the postpartum period. *Psychiatry Res.* 2002 Apr 15;109(3):213-9.
92. Mizuno O, Yokoyama T, Tsutsumi N. The changes of serum total cholesterol, HDL-cholesterol and atherogenic index in postpartum. *Nippon Sanka Fujinka Gakkai Zasshi.* 1984 Dec;36(12):2593-7.
93. Erkkola R, Viikari J, Irjala K, Solakivi-Jaakkola T. One-year follow-up of lipoprotein metabolism after pregnancy. *Biol Res Pregnancy Perinatol.* 1986;7(2):47-51
94. Rodkiewicz B, Szotowa W, Woynarowska B, et al. Serum cholesterol levels in children aged 4-14 years. *Probl Med Wieku Rozwoj.* 1984;13:95-102.
95. Lin CC, Lai MM, Liu CS, Li TC. Serum cholesterol levels and prevalence of hypercholesterolemia in school-aged Taiwanese children and adolescents: the Taichung Study. *Zhonghua Yi Xue Za Zhi (Taipei).* 1999 Nov;62(11):787-94.
96. Lerman-Garber I, Sepúlveda-Amor JA, Tapia-Conyer R, et al. Cholesterol levels and prevalence of hypercholesterolemia in Mexican children and teenagers. *Atherosclerosis.* 1993 Nov;103(2):195-203.
97. Suthutvoravut U, Charoenkiatkul S, Chitchumroonchokchai C, et al. Elevated serum cholesterol levels in Bangkok children and adolescents. *J Med Assoc Thai.* 1999 Nov;82 Suppl 1:S117-21.
98. Rose G, Kumlin L, Dimberg L, et al. Work-related life events, psychological well-being and cardiovascular risk factors in male Swedish automotive workers. *Occup Med (Lond).* 2006 Sep;56(6):386-92. Epub 2006 Jun 16.
99. Wilson RF, Barletta JF, Tyburski JG. Hypocholesterolemia in sepsis and critically ill or injured patients. *Crit Care.* 2003 Dec;7(6):413-4. Epub 2003 Oct 6.
100. Dunham CM, Fealk MH, Sever WE 3rd. Following severe injury, hypocholesterolemia improves with convalescence but persists with organ failure or onset of infection. *Crit Care.* 2003 Dec;7(6):R145-53. Epub 2003 Oct 1.

# References

---

101. Swaner JC, Connor WE. Hypercholesterolemia of total starvation: its mechanism via tissue mobilization of cholesterol. *Am J Physiol.* 1975 Aug;229(2):365-9
102. Lehtonen A, Viikari J. Serum lipids in soccer and ice-hockey players. *Metabolism.* 1980 Jan;29(1):36-9.
103. Smolarczyk R, Romejko E, Wojcicka-Jagodzinska J, et al. Lipid metabolism in women with threatened abortion. *Ginekol Pol.* 1996 Oct;67(10):481-7.
104. Iribarren C, Jacobs DR Jr, Sidney S et al. Serum total cholesterol and risk of hospitalization, and death from respiratory disease. *Int J Epidemiol.* 1997 Dec;26(6):1191-202.
105. Iribarren C, Jacobs DR Jr, Sidney S, et al. Cohort study of serum total cholesterol and in-hospital incidence of infectious diseases. *Epidemiol Infect.* 1998 Oct;121(2):335-47.
106. Ahaley SK, Sardeshmukh AS, Suryakar AN, Samson PD. Correlation of serum lipids and lipoproteins in leprosy. *Indian J Lepr.* 1992 Jan-Mar;64(1):91-8.
107. Leardi S, Altília F, Delmonaco S, et al. Blood levels of cholesterol and postoperative septic complications. *Ann Ital Chir.* 2000 Mar-Apr;71(2):233-7.
108. Ravnskov U. The cholesterol myths. Washington, DC, USA;2000;56-60.
109. Ravnskov U. The Cholesterol Myths. 2000;291.
110. Morillas PJ, Cabadés A, Bertomeu V, et al. Acute myocardial infarction in patients under 45 years. *Rev Esp Cardiol.* 2002 Nov;55(11):1124-31.
111. Castelli WP. The new pathophysiology of coronary artery disease. *Am J Cardiol.* 1998 Nov 26;82(10B):60T-65T.

# References

---

112. Lehto S, Palomäki P, Miettinen H, et al. Serum cholesterol and high density lipoprotein cholesterol distributions in patients with acute myocardial infarction and in the general population of Kuopio province, eastern Finland. *J Intern Med.* 1993 Feb;233(2):179-85.
113. Ladeia AM, Guimaraes AC, Lima JC. The lipid profile and coronary artery disease. *Arq Bras Cardiol.* 1994;63(2):101-6.
114. Bratus' VV, Talaieva TV, Lomakovs'kyi OM, et al. Modified lipoproteins – their types and role in atherogenesis. *Fiziol Zh.* 2000;46(2):73-81.
115. Goldstein JL, Hazzard WR, Schrott HG, et al. Hyperlipidemia in coronary heart disease. I. Lipid levels in 500 survivors of myocardial infarction. *J Clin Invest.* 1973 Jul;52(7):1533-43.
116. Singh TK. An assessment of serum lipid and lipoprotein levels in patients with ischaemic heart disease. *Ann Acad Med Singapore.* 1992 Nov;21(6):773-80.
117. Windler E, Ewers-Grabow U, Thiery J, et al. The prognostic value of hypocholesterolemia in hospitalized patients. *Clin Investig.* 1994 Dec;72(12):939-43.
118. Onder G, Landi F, Volpato S, et al. Serum cholesterol levels and in-hospital mortality in the elderly. *Am J Med.* 2003 Sep;115(4):265-71.
119. Wannamethee G, Shaper AG, Whincup PH, Walker M. Low serum total cholesterol concentrations and mortality in middle aged British men. *BMJ.* 1995 Aug 12;311(7002):409-13.
120. Schatz IJ, Masaki K, Yano K, et al. Cholesterol and all-cause mortality in elderly people from the Honolulu Heart Program: a cohort study. *Lancet.* 2001 Aug 4;358(9279):351-5.
121. Iribarren C, Reed DM, Burchfiel CM, Dwyer JH. Serum total cholesterol and mortality. Confounding factors and risk modification in Japanese-American men. *JAMA.* 1995 Jun 28;273(24):1926-32.

# References

---

122. Iribarren C, Reed DM, Chen R, et al. Low serum cholesterol and mortality. Which is the cause and which is the effect? *Circulation*. 1995 Nov 1;92(9):2396-403.
123. Behar S, Graff E, Reicher-Reiss H, et al. Low total cholesterol is associated with high total mortality in patients with coronary heart disease. The Bezafibrate Infarction Prevention (BIP) Study Group. *Eur Heart J*. 1997 Jan;18(1):52-9.
124. Siemianowicz K, Gminski J, Stajszczyk M, et al. Serum total cholesterol and triglycerides levels in patients with lung cancer. *Int J Mol Med*. 2000 Feb;5(2):201-5.
125. Neaton JD, Blackburn H, Jacobs D, et al. Serum cholesterol level and mortality findings for men screened in the Multiple Risk Factor Intervention Trial. Multiple Risk Factor Intervention Trial Research Group. *Arch Intern Med*. 1992 Jul;152(7):1490-500.
126. Umeki S. Decreases in serum cholesterol levels in advanced lung cancer. *Respiration*. 1993;60(3):178-81.
127. Hiatt RA, Fireman BH. Serum cholesterol and the incidence of cancer in a large cohort. *J Chronic Dis*. 1986;39(11):861-70.
128. Williams RR, Sorlie PD, Feinleib M, McNamara PM, Kannel WB, Dawber TR. Cancer incidence by levels of cholesterol. *JAMA*. 1981 Jan 16;245(3):247-52.
129. Törnberg SA, Carstensen JM, Holm LE. Risk of stomach cancer in association with serum cholesterol and beta-lipoprotein. *Acta Oncol*. 1988;27(1):39-42.
130. Knekt P, Reunanen A, Aromaa A, et al. Serum cholesterol and risk of cancer in a cohort of 39,000 men and women. *Clin Epidemiol*. 1988;41(6):519-30.
131. Jakovljević M, Reiner Z, Milčić D. Mental disorders, treatment response, mortality and serum cholesterol: a new holistic look at old data. *Psychiatr Danub*. 2007 Dec;19(4):270-81.
132. Golomb BA, Stattin H, Mednick S. Low cholesterol and violent crime. *J Psychiatr Res*. 2000 Jul-Oct;34(4-5):301-9.

# References

---

133. Atmaca M, Kuloglu M, Tezcan E, et al. Serum leptin and cholesterol levels in patients with bipolar disorder. *Neuropsychobiology*. 2002;46(4):176-9.
134. Cassidy F, Carroll BJ. Hypocholesterolemia during mixed manic episodes. *Eur Arch Psychiatry Clin Neurosci*. 2002 Jun;252(3):110-4.
135. Steegmans PH, Hoes AW, Bak AA, et al. Higher prevalence of depressive symptoms in middle-aged men with low serum cholesterol levels. *Psychosom Med*. 2000 Mar-Apr;62(2):205-11.
136. Hawthorn K, Cowen P, Owens D, et al. Low serum cholesterol and suicide. *Br J Psychiatry*. 1993 Jun;162:818-25.
137. Brunner J, Parhofer KG, Schwandt P, Bronisch T. [Cholesterol, omega-3 fatty acids, and suicide risk: empirical evidence and pathophysiological hypotheses][Article in German] *Fortschr Neurol Psychiatr*. 2001 Oct;69(10):460-7.
138. Rabe-Jablonska J, Poprawska I. Levels of serum total cholesterol and LDL-cholesterol in patients with major depression in acute period and remission. *Med Sci Monit*. 2000 May-Jun;6(3):539-47.
139. Ellison LF, Morrison HI. Low serum cholesterol concentration and risk of suicide. *Epidemiology*. 2001 Mar;12(2):168-72.
140. Glueck CJ, Kuller FE, Hamer T, et al. Hypocholesterolemia, hypertriglyceridemia, suicide, and suicide ideation in children hospitalized for psychiatric diseases. *Pediatr Res*. 1994 May;35(5):602-10.
141. Maccari S, Bassi C, Zanoni P, Plancher AC. Plasma cholesterol and triglycerides in heroin addicts. *Drug Alcohol Depend*. 1991 Dec 31;29(2):183-7.
142. Wilczek H, Ceska R, Zlatohlávek L. Serum lipids in drug addicts. *Vnitr Lek*. 2004 Aug;50(8):584-6.
143. Ho WK, Wen HL, Fung KP, et al. Comparison of plasma hormonal levels between heroin-addicted and normal subjects. *Clin Chim Acta*. 1977 Mar 15;75(3):415-9.



# References

---

144. Oganov RG, Shestov DB, Deev AD, et al. Increased risk of death from coronary heart disease in men with low blood concentration of total cholesterol and low density lipoprotein cholesterol according to data from a prospective epidemiologic study in Moscow and Leningrad within the framework of Soviet-American cooperation. *Ter Arkh.* 1991;63(1):6-11.
145. Corti MC, Guralnik JM, Salive ME, et al. Clarifying the direct relation between total cholesterol levels and death from coronary heart disease in older persons. *Ann Intern Med.* 1997 May 15;126(10):753-60.
146. Dziobek I, Gold SM, Wolf OT, Convit A. Hypercholesterolemia in Asperger syndrome: independence from lifestyle, obsessive-compulsive behavior, and social anxiety. *Psychiatry Res.* 2007 Jan 15;149(1-3):321-4. Epub 2006 Nov 22.
147. Iribarren C, Jacobs DR, Sadler M, et al. Low total serum cholesterol and intracerebral hemorrhagic stroke: is the association confined to elderly men? The Kaiser Permanente Medical Care Program. *Stroke.* 1996 Nov;27(11):1993-8.
148. Mori M, Li G, Abe I, et al. Lanosterol synthase mutations cause cholesterol deficiency-associated cataracts in the Shumiya cataract rat. *J Clin Invest.* 2006 Feb;116(2):395-404. Epub 2006 Jan 26.
149. Kamilova AT, Aripov AN. Clinico-laboratory parallels during celiac disease in children. *Klin Lab Diagn.* 2000 Nov;(11):39-42.
150. Wei M, Macera CA, Davis DR, et al. Total cholesterol and high density lipoprotein cholesterol as important predictors of erectile dysfunction. *Am J Epidemiol.* 1994 Nov 15;140(10):930-7.
151. Nikoobakht M, Pourkasmaee M, Nasseh H. The relationship between lipid profile and erectile dysfunction. *Urol J.* 2005 Winter;2(1):40-4.
152. Vrentzos GE, Paraskevas KI, Mikhailidis DP. Dyslipidemia as a risk factor for erectile dysfunction. *Curr Med Chem.* 2007;14(16):1765-70.
153. Padrón RS, Más J, Zamora R, et al. Lipids and testicular function. *Int Urol Nephrol.* 1989;21(5):515-9.

# References

---

154. Bates DW, Buchwald D, Lee J, et al. Clinical laboratory test findings in patients with chronic fatigue syndrome. Arch Intern Med. 1995 Jan 9;155(1):97-103.
155. Dzugan SA, Smith RA. Broad spectrum restoration in natural steroid hormones as possible treatment for hypercholesterolemia. Bull Urg Rec Med. 2002;3:278-84.
156. Dzugan SA, Smith RA. Hypercholesterolemia treatment: a new hypothesis or just an accident. Med Hypotheses. 2002;59:751-6.
157. Dzugan SA, Smith RA, Kuznetsov AS. A new statin free method of hypercholesterolemia. Health Don. 2004;4:19-25.
158. Smith RA, Dzugan SA, Rafique S. Extended survival of lung cancer patients with brain metastasis. Clinician. 1997;3:91-4.
159. Smith RA, Dzugan SA, Rafique S, et al. Peripheral blood natural killer cell increase as a predictor of survival in metastatic cancer patients treated by neuroimmunotherapy with subcutaneous low-dose IL-2 plus melatonin. Int J Immunother. 1999;15:131-5.
160. Smith RA, Dzugan SA. Comparison of statistics survival: Non small-cell lung cancer. J Cancer Integr Med. 2004;2(1):43-4.
161. Dzugan SA, Smith RA, Kuznetsov AS. Five years survivorship in bilateral lung cancer. Non-surgical treatment with palliative radiotherapy and bioimmunotherapy. Health Don. 2006;1:38-42.
162. Virchow, Rudolph (1856). Phlogose und Thrombose im Gefäßsystem. In: Gesammelte Abhandlungen zur wissenschaftlichen Medizin. Germany: Staatsdruckerei Frankfurt.
163. Gofman JW, Jones HB, Lindgren FT, et al. Blood lipids and human atherosclerosis. Circulation. 1950 Aug;2(2):161-78.



# References

---

164. Gofman JW. Blood lipoproteins and atherosclerosis. J Clin Invest. 1950 Jun;29(6):815-6.
165. Duff GL, McMillan GC. Pathology of atherosclerosis. Am J Med. 1951 Jul;11(1):92-108.
166. Keys A. Atherosclerosis: a problem in newer public health. J Mt Sinai Hosp N Y. 1953 Jul-Aug;20(2):118-39.
167. Bjorkhem I, Meaney S. Brain cholesterol: long secret life behind a barrier. Arterioscler Thromb Vasc Biol. 2004 May;24(5):806-15. Epub 2004 Feb
168. Vance JE, Hayashi H, Karten B. Cholesterol homeostasis in neurons and glial cells. Semin Cell Dev Biol. 2005 Apr;16(2):193-212.
169. Available at:  
[http://www.sigmaaldrich.com/Area\\_of\\_Interest/Biochemicals/Enzyme\\_Explorer/Key\\_Resources/Plasma\\_\\_Blood\\_Protein/Lipoprotein\\_Function.html](http://www.sigmaaldrich.com/Area_of_Interest/Biochemicals/Enzyme_Explorer/Key_Resources/Plasma__Blood_Protein/Lipoprotein_Function.html) Accessed February 28, 2008.
170. Lee M-LT, Rosner BA, Weiss ST, et al. Predictors of Cardiovascular Death: The Normative Aging Study – 1963-1998. Clinical Geriatrics 1999;7(9): (www.mmhc.com/cg/articles/CG9909/lee.html)
171. Woldow A. Hyperlipidemia and its significance in the aged population. J Am Geriatr Soc. 1975 Sep;23(9):407-10.
172. Smith RG, Betancourt L, Sun Y. Molecular endocrinology and physiology of the aging central nervous system. Endocr Rev. 2005 Apr;26(2):203-50. Epub 2004 Nov 23.
173. Wester RC, Noonan PK, Maibach HI. Variations in percutaneous absorption of testosterone in the rhesus monkey due to anatomic site of application and frequency of application. Arch Dermatol Res. 1980;267(3):229-35.
174. Oriba HA, Bucks DA, Maibach HI. Percutaneous absorption of hydrocortisone and testosterone on the vulva and forearm: effect of the menopause and site. Br J Dermatol. 1996 Feb;134(2):229-33.

# References

---

175. Turgeon JL, Carr MC, Maki PM, et al. Complex actions of sex steroids in adipose tissue, the cardiovascular system, and brain: Insights from basic science and clinical studies. *Endocr Rev.* 2006 Oct;27(6):575-605. Epub 2006 Jun 9.
176. Itoh T, Matsumoto M, Hougaku H, et al. Effects of low-dose simvastatin therapy on serum lipid levels in patients with moderate hypercholesterolemia: a 12-month study. The Simvastatin Study Group. *Clin Ther.* 1997 May-Jun;19(3):487-97.
177. Available at: <http://www.rpi.edu/dept/bcbp/molbiochem/MBWeb/mb2/part1/lipoprot.htm> Accessed March 07, 2008.
178. Dzugan SA, Rozakis GW, Dzugan SS, Smith RA. Hormonorestorative therapy is a promising method for hypercholesterolemia treatment. *Approaches to Aging Control.* 2009;13:12-19.
179. Dzugan SA, Rozakis GW, Dzugan KS, Emhof L, Dzugan SS, Xydas D, Michaelides C, Chene J, Medvedovsky M. Correction of Steroidopenia as a New Method of Hypercholesterolemia Treatment. *Neuroendocrinology Letters (NEL).* 2011;32(1):77-81.
180. Russell RG. Bisphosphonates: The first 40 years. *Bone.* 2011 Jul;49(1):2-19.
181. Ebetino FH, Hogan AM, Sun S, Tsoumpra MK, Duan X, Triffitt JT, et al. The relationship between the chemistry and biological activity of the bisphosphonates. *Bone.* 2011 Jul;49(1):20-33.
182. Luckman SP, Hughes DE, Coxon FP, Graham R, Russell G, Rogers MJ. Nitrogen-containing bisphosphonates inhibit the mevalonate pathway and prevent post-translational prenylation of GTP-binding proteins, including Ras. *J Bone Miner Res.* 1998 Apr;13(4):581-589.
183. Corey O. Montgomery, John W. Bracey, and Larry J. Suva. Bisphosphonates: the good, the bad, and the unidentified. *AAOS Now.* Dec 2011.

# References

---

184. Peter D. Papapetrou. Bisphosphonate-associated adverse events. *HORMONES* 2009, 8(2):96-110.
185. Tschudi MR, Noll G, Lüscher TP. Pharmacotherapy of arteriosclerosis and its complications. Effect of ACE inhibitors and HMG-CoA-reductase inhibitors. *Schweiz Med Wochenschr.* 1997 Apr 12;127(15):636-49.
186. Kaunitz H. The significance of dietary fat in arteriosclerosis. An outmoded theory? *MMW Munch Med Wochenschr.* 1977 Apr 22;119(16):539-42.
187. Kang J, Rivest S. Lipid Metabolism and Neuroinflammation in Alzheimer's Disease: A Role for Liver X Receptors. *Endocrine Reviews* 33: 715–746, 2012.
188. Turley SD, Burns DK, Dietschy JM 1998 Preferential utilization of newly synthesized cholesterol for brain growth in neonatal lambs. *Am J Physiol* 274:E1099–E1105
189. Björkhem I, Luftjohann D, Diczfalusy U, Ståhle L, Ahlborg G, Wahren J 1998 Cholesterol homeostasis in human brain: turnover of 24S-hydroxycholesterol and evidence for a cerebral origin of most of this oxysterol in the circulation. *J Lipid Res* 39:1594–1600
190. Jurevics H, Morell P 1995 Cholesterol for synthesis of myelin is made locally, not imported into brain. *J Neurochem* 64:895–901
191. Dietschy JM 2009 Central nervous system: cholesterol turnover, brain development and neurodegeneration. *Biol Chem* 390:287–293
192. Morell P, Jurevics H 1996 Origin of cholesterol in myelin. *Neurochem Res* 21:463–470

# References

---

193. Kenis I, Tartakover-Matalon S, Cherepnin N, Drucker L, Fishman A, Pomeranz M, Lishner M. Simvastatin has deleterious effects on human first trimester placental explants. *Hum Reprod.* 2005 Oct;20(10):2866-72.
194. Azzarito C, Boiardi L, Vergoni W, Zini M, Portioli I. Testicular function in hypercholesterolemic male patients during prolonged simvastatin treatment. *Horm Metab Res.* 1996 Apr;28(4):193-8.
195. Rabijewski M, Kozakowski J, Zgliczyński W. [The relationship between testosterone and dehydroepiandrosterone sulfate concentrations, insulin resistance and visceral obesity in elderly men]. *Endokrynol Pol.* 2005 Nov-Dec;56(6):897-903.
196. Smals AG, Weusten JJ, Benraad TJ, Kloppenborg PW. The HMG-CoA reductase inhibitor simvastatin suppresses human testicular testosterone synthesis in vitro by a selective inhibitory effect on 17-ketosteroid-oxidoreductase enzyme activity. *J Steroid Biochem Mol Biol.* 1991 Apr;38(4):465-8.
197. Krysiak R1, Zmuda W, Okopien B. The effect of ezetimibe on androgen production in hypercholesterolemic women with polycystic ovary syndrome. *Cardiovasc Ther.* 2014 Oct;32(5):219-23.
198. Mędraś M, Kubicka E, Józkow P, Słowińska-Lisowska M, Trzmiel-Bira A, Filus A. Treatment with statins and testosterone levels in men. *Endokrynol Pol.* 2014;65(6):464-8.
199. James, JT. A New, Evidence-based Estimate of Patient Harms Associated with Hospital Care. *J Patient Saf.* 2013 Sep;9(3):122-8.
200. Sukhija, Rishi, Prayaga, Sastry, Marashdeh, et al. Effects of Statins on Fasting Plasma Glucose in Diabetic and Nondiabetic Patients. *J Investig Med.* 2009 Mar;57(3):495-9.
201. DuBroff RJ. The Statin Diabetes Conundrum: Short-term Gain, Long-term Risk or Inconvenient Truth? *Evid Based Med.* 2015;20(4):121-123.

# References

---

- 202. Koudinova NV, Berezov TT, Koudinov AR: Cholesterol failure is a unifying cause of neurodegeneration. *Neurobiol. Lipids.* 2004;3:7.
- 203. Koudinov AR, Koudinova NV. Cholesterol homeostasis failure as a unifying cause of synaptic degeneration. *J Neurol Sci.* 2005 Mar 15;229-230,233-40.
- 204. Navab M, Van Lenten BJ, Reddy ST, Fogelman AM. High-density lipoprotein and the dynamics of atherosclerotic lesions. *Circulation.* 2001 Nov 13;104(20):2386-7.